



**BURLINGTON – GRAHAM METROPOLITAN PLANNING ORGANIZATION
TRANSPORTATION ADVISORY COMMITTEE**

Via Zoom and In-person

**TUESDAY FEBRUARY 15, 2022 5:30 PM
(Meal served at 5:00 p.m. for TAC members)**

**John Robert Kernodle Senior Center
1535 S. Mebane St. Burlington, NC**

In-person attendance is limited to TAC members, MPO staff and presenters (optional). All individuals, regardless of vaccination status, should wear appropriate face coverings and are required to maintain social distancing as much as possible.

**Join Zoom Meeting
<https://us06web.zoom.us/j/6581665366>
Meeting ID: 658 166 5366**

**Dial by your location
+1 301 715 8592 US
Meeting ID: 658 166 5366**

AGENDA

Any member of the general public who wishes to make public comment should send an email to wmallette@burlingtonnc.gov or (336) 513-5418 by Friday, February 11, 2022, 3:00 p.m. to receive the meeting login information or to have their comments read during the public comment portion of the meeting.

- 1) Call to Order and Determination of Quorum Chairman**
 - Welcome and Introductions
 - Roll Call Attendance
 - Changes to Agenda / Add On Items
 - Speakers from the Floor – 3 minutes per speaker
 - NC Ethics Statement for TAC members
 - ACTA Board Appointment

- 2) Approval of Minutes from January 18, 2022 Meeting Chairman**

3) STIP Modification – Link Transit

John Andoh/Mike Nunn

INFORMATION: The City of Burlington/Link Transit is requesting a STIP and TIP modification to support fixed route and paratransit fleet replacement. The Transit Subcommittee and BGMPO staff are in support of Link Transit’s request for \$448,341 in Section 5307 urbanized area formula funds and recommend TAC approval by resolution.

RECOMMENDATION/ACTION: 1) Receive information and discuss; 2) Approve Link Transit STIP and TIP modification by resolution.

4) BGMPO TIP Amendments

Blake Cashmore

INFORMATION: The BGMPO Transportation Improvement Program (TIP) and 2045 Metropolitan Transportation Plan (MTP) consists of projects that have been amended in the NCDOT 2020 – 2029 State Transportation Improvement Program (STIP). As the adopted 2020-2029 Metropolitan Transportation Improvement Program (TIP) is a subset of the STIP, the TIP and MTP are in need of amendment to align with state and federally funded transportation projects within the BGMPO urban area.

RECOMMENDATION/ACTION: 1) Receive information and discuss; 2) Approve February TIP amendments by resolution.

5) FY 22 Section 5307 Formula Fund Suballocation

Wannetta Mallette

INFORMATION: As the subrecipient of Federal Transit Administration Section 5307 formula funds for the Burlington – Graham Urbanized Area, staff developed the methodology to suballocate FY 22 funds to the five transit operators in accordance with the MPO Transit Allocation Plan and “Split Letter” schedule. The Section 5307 federal share is 80% of the project costs for capital expenditures, 90% for Americans with Disabilities and Clean Air Act vehicle-related equipment and 50% for operating assistance. Transit agencies must provide the respective non-federal match.

RECOMMENDATION/ACTION: 1) Receive information and discuss; 2) Approve FY 22 Section 5307 Formula Fund suballocation by resolution.

6) Transportation Safety Plan Update

Eric Tang

INFORMATION: VHB, Inc was contracted by NCDOT to develop the BGMPO Transportation Safety Plan and is tasked with providing TCC and TAC quarterly project updates. VHB will present an overview of the existing conditions analysis and public engagement strategies for the upcoming February 23rd virtual public meeting.

RECOMMENDATION/ACTION: 1) Receive information and discuss.

7) **Mebane Park and Ride Relocation Study** **Bonnie Guo**

INFORMATION: GoTriangle received a BGMP FY 21 UPWP Special Studies grant to conduct the Mebane Park and Ride Relocation Study. The project was awarded to Kimley-Horn and Associate, Inc. The project scope included the development of site parameters and evaluation criteria for a 150 - 200 space park and ride shared by GoTriangle, PART, and Orange County Public Transportation.

RECOMMENDATION: Receive information and discuss.

8) **NCDOT BOT** **Mike Fox**

9) **FHWA** **Suzette Morales**

10) **NCDOT TPD** **Andy Bailey**

11) **NCDOT Division Engineer Report** **Stephen Robinson**

12) **Other Business** **Wannetta Mallette**

- MPO Updates
- Reports and Questions from TAC Members
- Next Meeting Scheduled **March 15, 2022**

ACCESS TO INFORMATION:

ALL MPO DOCUMENTS AND DATA CAN BE PROVIDED IN ALTERNATIVE FORMAT UPON REQUEST
PLEASE CONTACT THE MPO OFFICE FOR ADDITIONAL ASSISTANCE AND INFORMATION

336-513-5418

ACCESO A INFORMACION

TODOS LOS DOCUMENTOS Y DATOS DE MPO SE PUEDEN PROPORCIONAR EN FORMATOS ALTERNOS A
PETICION

POR FAVOR COMUNIQUESE CON LA OFICINA DE MPO PARA INFORMACION E ASISTENCIA ADICIONAL
336-513-5418

It is the policy of the Burlington Graham Metropolitan Planning Organization to ensure that no person shall, on the ground of race, color, sex, age, national origin, or disability, be excluded from participation in, be denied the benefits of, or be otherwise subjected to discrimination under any program or activity as provided by Title VI of the Civil Rights Act of 1964, the Civil Rights Restoration Act of 1987

**BURLINGTON-GRAHAM URBAN AREA
TRANSPORTATION ADVISORY COMMITTEE
TUESDAY, JANUARY 18, 2022
VIA ZOOM**

DRAFT MINUTES

Due to technical difficulties, portions of this meeting were not recorded

MEMBERS PRESENT

Leonard Williams, Gibsonville (Chair)
Bob Ward, Burlington (Vice Chair)
Patty Phillips, Mebane
Monti Allison, Elon
Gary Deal, Whitsett
Kelly Allen, Haw River
Mary Beth Murphy, Guilford County
Jamezetta Bedford, Orange County

NCDOT STAFF

Stephen Robinson, NCDOT Division 7

FHWA STAFF

Suzette Morales

BGMPO STAFF PRESENT

Wannetta Mallette
Blake Cashmore

OTHERS PRESENT

Mike Nunn, Burlington
John Andoh, Link Transit
Eric Tang, VHB

Call to Order

Chair Leonard Williams welcomed all members and guests and called the January 18, 2022 TAC meeting to order at 5:30 p.m. Ms. Wannetta Mallette conducted the membership roll call and established a quorum. Chair Williams requested a motion to approve the agenda. Mr. Bob Ward made the motion to approve, seconded by Mr. Gary Deal. The motion carried by unanimous voice vote. Chair Williams made a request for public comments or speakers from the floor. There were no speakers from the floor and no public comments were made. Ms. Mallette read the Ethics Statement and no conflicts of interest were announced. Chair Williams then requested a motion to approve the meeting minutes. Mr. Ward made a motion to approve the January 18, 2022 TAC meeting minutes and Ms. Mary Beth Murphy seconded the motion. The motion passed unanimously by voice vote.

Election of 2022 TAC Officers

Ms. Mallette opened the floor for TAC officer nominations. Mr. Ward nominated Leonard Williams for TAC Chair. The nominations were closed after receiving no additional nominations. There being no discussion, Mr. Ward made a motion to approve the

nomination and the motion passed by unanimous voice vote. Ms. Mallette then opened the floor for Vice Chair nominations. Chair Williams nominated Mr. Bob Ward and no additional nominations were made. There be no discussion, Chair Williams made the motion to approve the nomination, seconded by Ms. Patty Phillips and the motion passed unanimously by voice vote. Chair Williams thanked the TAC for its support and expressed his sentiments for working with TAC members for another year.

TAC 2022 Meeting Calendar

Ms. Mallette presented the TAC 2022 meeting calendar for approval. There being no discussion, Chair Williams called for a motion to approve. Mr. Ward made the motion to approve the 2022 TAC meeting calendar. Chair Williams called for the voice vote and the motion carried unanimously by voice vote.

Draft FY 2023 Unified Planning Work Program

Ms. Mallette provided an overview of the Draft FY 2023 Unified Planning Work Program (UPWP). She explained the UPWP is a federal requirement for MPOs that outlines work tasks, provides operational transparency, and outlines opportunity for public input. The Federal Highway Administration (FHWA) and Federal Transit Administration (FTA) provide funding for MPOs that are sub-allocated at the state level according to population and individual planning needs. Ms. Mallette reviewed the categories of work tasks and the specific tasks and projects completed in FY 2022. Ms. Mallette then outlined proposed FY 2023 work tasks, which included among them a regional transit feasibility study, completion of the Transportation Safety Plan, and development of CommunityViz regional growth scenarios. Ms. Mallette requested TAC approval of the Draft UPWP and release for a 30-day public comment period. Chair Williams requested the motion. Mr. Ward made the motion to approve the draft UPWP and recommend the report's release for public comment. Ms. Kelly Allen seconded the motion and the motion passed unanimously by voice vote.

BGMPO TIP Amendments

Mr. Blake Cashmore presented the STIP BGMPO TIP amendments introduced during the months of November 2021 – January 2022. Four projects were amended during this period: TO-6170, a transit operations assistance project; EB-5885 and EB-5887, two bike and pedestrian projects in Burlington; and U-6014, a road widening project in Burlington along Graham-Hopedale Road. BGMPO staff recommended the TAC approve the TIP amendments and recommend TAC adoption by resolution. Ms. Mary Beth Murphy made a motion to approve the TIP. Mr. Monti Allison seconded the motion. The motion passed unanimously by voice vote.

Endorsement of 2022 MPO Safety Performance Targets

Ms. Mallette presented an overview of the 2022 MPO Safety Performance Measures and Targets. She explained that one of VHB's Transportation Safety Plan scope tasks is to determine if the BGMPO should continue endorsement of the state safety performance targets or develop their own. For the current year, BGMPO staff and TCC are recommending endorsement of the state targets until that determination is made by VHB. The motion to endorse the 2022 BGMPO safety targets carried by unanimous voice vote.

Triangle Region Air Quality Conformity Determination Report

Ms. Mallette stated the Air Quality Conformity Determination Report (AQ-CDR) was released December 2021 for public comment. No public comments were received to date. The AQ-CDR includes transportation projects that are in regional MPO's long-range plans that will be implemented to maintain compliance with state and federal emission requirements. While the BGMPO received no comments, DCHC, CAMPO and the Triangle Area MPO received comments recommending the inclusion of additional non-motorized solutions. Ms. Mallette requested TAC approval of the AQ-CDR pending public hearing comments. Chair Williams opened the public hearing. No public comments were made. Chair Williams then requested a motion to adopt the AQ-CDR by resolution. The motion passed unanimously by voice vote.

Agency Reports and Updates

FHWA: Ms. Suzette Morales reported FHWA released a notice of eight emphasis areas to improve the transportation planning process. FHWA Division offices are awaiting guidance from central headquarters before proceeding forward with implementation.

NCDOT-DIVISION 7: Mr. Stephen Robinson reported the crosswalk and pedestrian signal upgrades at South Church Street and Edgewood intersection and Boone Station Drive are almost complete. Only pavement re-markings and audible pedestrian buttons remain for the projects to be finished. Division staff is waiting for guidance from the STIP workgroup regarding the next STIP programming and hope to have more information within the next few months.

NCDOT-IMD: Mr. Alex Rotenberry introduced himself and explained NCDOT-IMD has four planning areas across the state with a corresponding planner. Mr. Rotenberry manages the western Piedmont area and will be BGMPO's primary point of contact. His jurisdiction excludes the Triangle area.

BGMPO: Ms. Mallette announced the first Transportation Safety Plan public meeting will be held Wednesday, February 23 at 6 p.m. The meeting will be in a virtual format. Preliminary crash and data findings will be presented at the next TAC meeting.

Adjournment

There being no further business, Chair Williams adjourned the meeting at 6:04 p.m. The next TAC meeting was scheduled for **February 15, 2022**.



RESOLUTION

BURLINGTON - GRAHAM METROPOLITAN PLANNING ORGANIZATION TRANSPORTATION IMPROVEMENT PROGRAM AMENDMENT

A motion was made by TAC Member _____ and seconded by TAC Member _____ for the adoption of the following resolution, and upon being put to a vote was duly adopted.

WHEREAS, the Metropolitan Transportation Improvement Program (MTIP) is a staged multiple year listing of all federally funded transportation projects scheduled for implementation within the Burlington-Graham Urban Area which have been selected from a priority list of projects; and

WHEREAS, the document provides the mechanism for official endorsement of the program of projects by the Transportation Advisory Committee; and,

WHEREAS, the Transportation Advisory Committee has reviewed the current Transportation Improvement Program and found the need to amend it; and,

WHEREAS, the following amendment has been proposed:

The addition of funds in the amount of \$448,341 for Link Transit public transportation system fixed route and paratransit capital assistance in the Burlington-Graham Urbanized Area from the Section 5307 Capital Reserves Fund; and,

WHEREAS, the projects listed in the MTIP are also included in the State Transportation Improvement Program (STIP) and balanced against anticipated revenues as identified in the STIP and by extension therefore demonstrates fiscal constraint: and,

WHEREAS, the Metropolitan Transportation Plan has a planning horizon year of 2045, and meets all the requirements in 23 CFR 450.

NOW THEREFORE, be it resolved by the Burlington-Graham Metropolitan Planning Organization Transportation Advisory Committee that the current Metropolitan Transportation Improvement Program be amended as listed above on this the _____ day of _____, 2022.



**RESOLUTION ADOPTING THE AMENDED 2020 – 2025 METROPOLITAN
TRANSPORTATION IMPROVEMENT PROGRAM AND AMENDED 2045
METROPOLITAN TRANSPORTATION PLAN FOR THE BURLINGTON - GRAHAM
METROPOLITAN PLANNING ORGANIZATION**

A motion was made by TAC member _____ and seconded by _____ for adoption of the resolution below, and upon being put to a vote was duly adopted on this _____ day of _____, 2022.

WHEREAS the provisions of 23 CFR Part 450 requires Metropolitan Planning Organizations (MPOs) to develop a multimodal, financially constrained Metropolitan Transportation Plan (MTP) with at least a twenty-year planning horizon and,

WHEREAS the Transportation Advisory Committee (TAC) of the Burlington - Graham Metropolitan Planning Organization (BGMP) is the MPO for the Burlington - Graham metropolitan planning area; and,

WHEREAS through the conduct of a continuing, comprehensive, and coordinated transportation planning process in conformance with applicable federal and state requirements, the BGMP developed the latest MTP with a 2045 horizon year; and,

WHEREAS the BGMP, in cooperation with the North Carolina Department of Transportation and with operators of publicly owned transit services, rail operators, the aviation authority and the bicycle and pedestrian community, adhered to the metropolitan transportation planning process in the development of the BGMP 2045 MTP; and,

WHEREAS the 2045 MTP was developed through a strategic, proactive, comprehensive public outreach and involvement program and local, regional, and federal interagency coordination and involvement; and,

WHEREAS the 2045 MTP contains an integrated set of strategies and investments to maintain, manage and improve the transportation system in the planning region through the year 2045 and calls for development of an integrated intermodal transportation system that facilitates the based reasonable available funding provisions; and,

WHEREAS the 2045 MTP integrates a Congestion Management Process identifying the most serious congestion problems and evaluating and incorporating, as appropriate, all reasonably available actions to reduce congestion, such as travel demand management and operational management strategies for all corridors with any proposed capacity increase; and,

WHEREAS the 2045 MTP meets federal air quality standards and is in attainment status for these standards; and,

WHEREAS the 2045 MTP includes, to the maximum extent practicable, a discussion of the performance measures and targets used in assessing the performance of the transportation system (Ref: 23 CFR 450.324) (f) (3)); and subsequent updates evaluating the condition and performance of

the transportation system with respect to the performance targets described in 23 CFR §450.306(d); and,

WHEREAS the 2045 MTP includes a financial plan that demonstrates how the adopted transportation plan can be implemented; and,

WHEREAS the BGMPO shall review and update the 2045 MTP at least every 5 years in attainment areas to confirm the transportation plan's validity and consistency with current and forecasted transportation and land use conditions and trends and to extend the forecast period to at least a 20-year planning horizon; and,

WHEREAS the projects listed in the FY 2020 – 2025 MTIP as amended are included in the State Transportation Improvement Program and balanced against anticipated revenues; and

WHEREAS the BGMPO 2020 – 2025 MTIP as amended is a direct subset of the 2045 MTP; and,

WHEREAS the public has had the opportunity to review and comment on the Amended 2020 – 2025 MTIP through public meetings and document sharing; and

NOW, THEREFORE, BE IT RESOLVED, that the Burlington - Graham Metropolitan Planning Organization Transportation Advisory Board hereby approves the amended 2020 – 2025 Metropolitan Transportation Improvement Program and 2045 Metropolitan Transportation Plan.

CERTIFICATE: The undersigned certifies that the foregoing is a true and correct copy of a resolution adopted by the voting members of the TAC on _____, 2022.

Leonard Williams, Chair
Transportation Advisory Committee

STATE of: North Carolina
COUNTY of Alamance

I, _____, Notary Public of _____ County, North Carolina do hereby certify that Leonard Williams personally appeared before me on the ____ day of _____ 2020 to affix his signature to the foregoing document.

Notary Public
My Commission expires: _____

BGMPO 2020 - 2025 Transportation Improvement Program (TIP) Amendments



**PROPOSED AMENDMENTS AND MODIFICATIONS
TO TRANSPORTATION PROJECTS IN THE
BURLINGTON - GRAHAM MPO (BGMPO) TRANSPORTATION IMPROVEMENT PROGRAM (TIP)
15-Feb-22**

(COST AND SCHEDULES ARE PRELIMINARY AND SUBJECT TO SIGNIFICANT CHANGE AS MORE INFORMATION BECOMES AVAILABLE)

ID Number	Facility	City/County	Location	Project Description	TIP As Amended February 2, 2022				
					Committed (FY 2020-2025)		Developmental STIP (FY 2026-2029)		Cost/Funding
					PE/ROW	Construction	PE/ROW	Construction	
INTERSTATE									
I-5954	I-40/85	Alamance/Orange	East of N 54 In Graham to West of Buckhorn Road	Pavement Rehabilitation	Under Construction				\$ 11,179,000
I-5836	I-40/85	Graham	NC 49 to NC 54	Pavement Rehabilitation	Under Construction				\$ 100,000
I-5956	I-40/85	Alamance/Guilford	East of Rock Creek Dairy Road to West of University Drive	Pavement Rehabilitation	Under Construction				\$ 4,702,000
I-6009	I-40/85	Burlington	Huffman Mill Road	Construct left turn lane and improve Garden Road Operations			FY 2028	FY 2029	\$ 1,587,000
I-5711	I-40/85	Mebane	Mebane Oaks Road	Interchange Improvements	FY 2021/2023				\$ 14,443,000
I-5309	I-40/85	Alamance	Guilford County Line to East of NC 49	Pavement Rehabilitation	Under Construction				\$ 14,411,000
I-6059	I-40/85	Mebane	Trollingwood-Hawfields Road	Interchange Improvements			FY 2028	Post STIP	\$ 12,400,000
I-5958	I-40/85	Mebane	Buckhorn Road to Orange Grove Road	Pavement Rehabilitation			FY 2027	FY 2028	\$ 8,840,000
HIGHWAY									
R-5787	Various	Division 7	Division wide	ADA Intersection Upgrades	In Progress				\$ 2,500,000
U-3110 A/B	New Route	Elon	US 70 to Westbrook	Construct Multilane Facility Part on New Location	Complete				\$ 30,477,000
U-6011	US 70	Burlington	Huffman Mill Road	Intersection Improvements	FY 2022	FY 2025		FY 2026	\$ 6,000,000
U-5752	US 70	Burlington	St. Marks Church Road	Intersection Improvements	Under Construction				\$ 4,278,000
U-6009	US 70	Burlington	Tarleton Avenue to Fifth Street	Widen and Construct Center Turn Lane			FY 2027	Post STIP	\$ 11,319,000
U-6183	NC 49	Haw River	Wilkins Road and Bason Road	Intersection Improvements			FY 2027	Post STIP	\$ 2,700,000
U-6115A	NC 54	Graham	Riverbend Road and Johnson Street	Intersection Improvements			FY 2028	Post STIP	\$ 2,700,000
U-6115B	NC 54	Graham	I-40/85 Interchange	Upgrade Ramp Intersections			FY 2028	Post STIP	\$ 6,300,000
U-6115C	NC 54	Graham	Woody Drive	Intersection Improvements			FY 2028	Post STIP	\$ 2,900,000
U-6115D	NC 54	Graham	Woody Drive and Whittemore Road	Upgrade Pipe Culverts			FY 2028	Post STIP	\$ 1,900,000
U-6184	NC 54	Burlington	South O'Neal Street	Intersection Improvements			FY 2027	Post STIP	\$ 14,600,000
U-6010	US 70	Burlington	University Drive	Intersection Improvements and Widening of US 70		FY 2022			\$ 8,400,000
U-5844	NC 62	Burlington	Ramada Road to Church Street	Widen to Multilanes	FY 2024	FY 2025		FY 2027	\$ 23,100,000
U-6182	NC 87	Burlington	Flora Avenue	New Traffic Signal/Turn Lanes			FY 2027	Post STIP	\$ 1,300,000
U-3109A	NC 119	Mebane	I-85 to North to Mrs. White Road	Relocation	Under Construction				\$ 18,195,000
U-3109B	NC 119	Mebane	North of Mebane Rogers Rd to S. of Mrs. White Road	Relocation	Under Construction				\$ 6,435,000
U-6013	NC 119	Mebane	Trollingwood-Hawfields Road to Lowes Boulevard	Widen to Multilanes	FY 2022	FY 2024		FY 2025	\$ 8,700,000
U-6214	E. Haggard	Elon	W. Webb at University Drive	Improve Intersection			FY 2027	Post STIP	\$ 13,000,000
U-5538	New Route	Mebane	Trollingwood-Hawfields Road to Industrial Site	Construct Two-Lane Road	Under Construction				\$ 3,740,000
U-6114	NC 62	Burlington	Hatchery Road at Bonnie Lane	New Traffic Signal/Turn Lanes	FY 2025			FY 2027	\$ 15,210,000
U-6014	Graham-Hopedale Road	Burlington	W. Hanover Road to Morningside Drive	Widen to Multilanes with Bike/Ped Lanes	FY 2023	FY 2025			\$ 19,100,000
U-6132	N. Main Street	Graham	W. Parker Street	Intersection Improvements			FY 2028	Post STIP	\$ 3,000,000
U-6131	NC 54	Burlington	Maple Avenue	Intersection Improvements	FY 2025			FY 2026	\$ 1,610,000
U-6017	NC 54	Graham	East Elm Street	Intersection Improvements	FY 2022	FY 2023			\$ 2,780,000
U-5843	US 70	Burlington	Graham-Hopedale Road	Intersection Improvements	Under Construction				\$ 7,160,000
R-5966	Various	Statewide		FTTP Road and Bridge Improvements		FY 2020-24			\$ 18,990,000
SIGNAL SYSTEM									
U-6015	Burlington	Burlington/Graham	Upgrade	Upgrade Signal System	Under Construction				\$ 9,266,000
BRIDGE REPLACEMENT									
B-4960	Judge Adams Road	Guilford	Little Alamance Creek	Bridge Replacement	Under Construction				\$ 3,514,000
B-6052	Trollingwood Road	Alamance	NCRR/Norfolk Southern Railroad	Bridge Replacement	FY 2024			FY 2026	\$ 3,000,000
B-5347	Pond Road	Alamance	Alamance Creek	Bridge Replacement	Under Construction				\$ 1,560,000
HB-9999	Statewide			Bridge Inspection Program	FY 2020-29				\$ 234,000,000
ID Number	Facility	City/County	Location	Project Description	TIP As Amended February 2, 2022				
					Committed (FY 2020-2025)		Developmental STIP (FY 2026-2029)		Cost/Funding
					PE/ROW	Construction	PE/ROW	Construction	
SAFETY									
HS-2007C	Various	Division 7	Division wide	Safety improvements at various locations in Division 7	FY 2021				\$3,455,000
W-5207	Various	Division 7	Division wide	Safety improvements at various locations in Division 7	Under				\$ 5,636,000
W-5707	Various	Division 7	Division wide	Safety improvements at various locations in Division 7	In Progress				\$ 4,757,000
W-5807B	Bonne Station Drive	Burlington	St. Marks Church Road/Java	Install Ped Signals and Curb Ramps		FY 2021			\$ 75,000
R-5787	Various	Division 7	Division wide	Intersection Upgrades for ADA Compliance		FY 21 and FY 22			\$ 2,500,000
CONGESTION MANAGEMENT									
C-5600	Various	CMAQ		Air Quality and Congestion Improvements	FY20,21,22	FY20,21,22			\$ 30,633,000
C-5601	Various	CMAQ		Air Quality and Congestion Improvements	FY20,21,22	FY20,21,22			\$ 4,404,000
C-5602	Various	CMAQ		Air Quality and Congestion Improvements	FY20 and 22	FY20 and 22			\$ 171,000
C-5702D	Statewide	CMAQ		Air Quality and Congestion Improvements	FY 2022				\$ 1,513,000
C-5702E	Statewide	CMAQ		Air Quality and Congestion Improvements	FY 2022				\$ 1,528,000
HO-0009	Statewide			Air Quality Awareness Outreach Program	FY 2022				\$ 860,000

MITIGATION PROJECTS								
EE-4907	Various	Division 7	Division wide	Project Mitigation	In Progress			\$ 18,169,000
HS-2007C	Various	Division 7	Division wide	Long-Life Pavement Markings	FY 2021			\$ 3,455,000
AVIATION								
AV-5851	Burlington/Alamance Airport	Burlington	Runway	Construct Paved Overrun/Safety Improvements	FY 2024			\$ 2,080,000
AV-5737	Burlington/Alamance Airport	Burlington	Runway 24 Approach Improvements	Easements and Construction Clearance	FY 2022			\$ 1,200,000
BICYCLE AND PEDESTRIAN								
EB-5879	US 70	Burlington	Graham-Hopedale Road to Sellars Mill Road	Construct Sidewalk	FY 2023	FY 2023		\$ 110,000
EB-5885	US 70	Burlington	Beaumont Avenue to Graham-Hopedale Road	Construct Sidewalk	FY 2022			\$ 120,000
EB-5887	NC 49/ NC 54	Graham	W. Pine Street to N. Marshall Street	Construct Sidewalk	FY 2022	FY 2023		\$ 149,000
EB-5988	Lee Avenue	Elon	W. Lebanon Avenue to W. Haggard Avenue	Construct Sidewalk	FY 2024/25		FY 2026	\$ 307,000
TRANSIT								
TU-0008	Statewide			NCDOT/ITRE Technical Assistance	FY 2022			\$ 588,000
TU-0009	Statewide			NCDOT/ITRE ADA Training	FY 2022			\$ 765,000
TU-0005	Statewide			Administrative	FY 2022			\$ 3,309,000
TU-0003	Statewide			HOPE Grant	FY 2021			\$ 122,000
TO-0003	Statewide			Human Trafficking Awareness Grant	FY 2021			\$ 150,000
TO-0004	Statewide			System Safety Oversight Grant	FY 2021			\$ 440,000
TI-6109	Statewide			Intercity Bus Funds	FY 2021			\$ 2,608,000
TM-0024	Statewide			FTA Grant	FY 2021			\$ 313,000
TG-6187	Statewide			Formula Funding	FY 2020/22			\$ 3,751,000
TC-0005	Statewide			5339 Facility Construction Grant	FY 2021			\$ 2,085,000
TC-0006	Statewide			5339 Facility Construction Grant	FY 2021			\$ 419,000
TC-0007	Statewide			5339 Facility Construction Grant	FY 2021			\$ 1,486,000
TC-0008	Statewide			5339 Facility Construction Grant	FY 2021			\$ 5,000,000
TC-0010	Statewide			5339 Facility Construction Grant	FY 2021			\$ 1,419,000
TC-0011	Statewide			5339 Facility Construction Grant	FY 2021			\$ 2,989,000
TC-0012	Statewide			5339 Facility Construction Grant	FY 2021			\$ 1,117,000
TC-0013	Statewide			5339 Facility Construction Grant	FY 2021			\$ 420,000
TC-0018	Statewide			5310 Funds for Rural Non Transit Projects	FY 2022			\$ 980,000
TC-0019	Statewide			5311 Capital Funds for FTA Grants	FY 2022			\$ 17,147,000
TC-0020	Statewide			5339 Small Urban Grants	FY 2022			\$ 2,185,000
TC-0021	Statewide			5339 Statewide Rural Grants	FY 2022			\$ 5,670,000
TC-0022	Statewide			5311 ADTAP Capital Fund for FTA Grants	FY 2022			\$ 1,880,000
TG-0002	Statewide			5307 Bus Capital	FY 2021			\$ 21,000
TG-0004	Statewide			5307 Bus Capital	FY 2021			\$ 168,000
TG-0005	Statewide			5307 Bus Capital	FY 2021			\$ 168,000
TM-0010	Statewide			5307 Operating Funds	FY 2021			\$ 142,000
TM-0012	Statewide			5307 Operating Funds	FY 2021			\$ 129,000
TM-0014	Statewide			5307 Operating Funds	FY 2021			\$ 75,000
TM-0015	Statewide			5307 Operating Funds	FY 2021			\$ 145,000
TM-0020	Statewide			5307 Operating Funds	FY 2021			\$ 45,000
TM-0022	Statewide			5307 Operating Funds	FY 2021			\$ 18,000
TM-0025	Statewide			5310 Operating Funds	FY 2022			\$ 4,212,000
TM-0027	Statewide			5311 Funds for FTA Grants	FY 2022			\$ 22,908,000
TM-0028	Statewide			5311 Funds for FTA Grants	FY 2022			\$ 1,634,000
TM-0029	Statewide			5311 Funds for FTA Grants	FY 2022			\$ 3,361,000
TM-0030	Statewide			5311 Funds for FTA Grants	FY 2022			\$ 177,000
TM-0031	Statewide			RTAP Funds for FTA Grants	FY 2022			\$ 280,000
TM-0032	Statewide			5311 Intercity Bus Funds for FTA Grants	FY 2022			\$ 4,227,000
TM-0033	Statewide			5311 Intercity Bus Funds	FY 2022			\$ 2,698,000
TM-0036	Statewide			5310 Administrative Funds	FY 2022			\$ 567,000
TG-6811B	ACTA	Alamance		Funding for Preventive Maintenance	FY 2020			\$ 46,000
	LinkTransit	Alamance		Operating Assistance	FY 2020/21			\$ 1,538,000
	LinkTransit	Alamance		Paratransit Funding	FY 2020/21			\$ 244,000
	LinkTransit	Alamance		Capital Assistance	FY 2020/21			\$ 655,000
TA-6733	LinkTransit	Alamance		Capital Assistance	FY 2020			\$ 1,235,000
TD-6322	LinkTransit	Alamance		Capital Assistance	FY2020			\$ 60,000
TG-6812A	LinkTransit	Alamance		ADA Services	FY 2020			\$ 211,000
TO-6170	LinkTransit	Alamance		Operating Assistance	FY 2022			\$ 1,880,000
TP-5162	LinkTransit	Alamance		Planning for Facility Feasibility Study	FY 2020			\$ 95,000
TP-5161	LinkTransit	Alamance		Planning for Fixed Route Service Expansion	FY 2020			\$ 5,000
TO-5220	BGMPO	Orange		Operating Assistance	FY 2020			\$ 282,000
TO-6151	LinkTransit	Guilford		Operating Assistance	FY 2020/21			\$ 4,032,000
TO-6142	Statewide	Statewide		Formula Funding	FY 2020/22			\$ 18,778,000
TO-5214	ACTA	Alamance		Operating Assistance	FY 2020/27			\$ 10,060,000
TK-6103	ACTA	Alamance		Administration	FY 2020/23			\$ 4,882,000
TG-6137B	PART	Alamance		Capital	FY 2020/25			\$ 1,000,000
TO-5136	PART	Alamance/Guilford		Operating Assistance	FY 2020/23			\$ 11,817,000
TO-5134	PART	Alamance		Operating Assistance	FY 2020/25			\$ 3,806,000
MISCELLANEOUS								
M-0414	Statewide			Municipal Bridge Inspection Program	FY 2020-29			\$ 10,000,000
PASSENGER RAIL								
P-4405	Various	Division 7		Private Crossings Safety	In Progress			\$ 10,291,000
RC-2000	Various	Statewide		Traffic Separation Study Implementation	To Be Requested			
RC-2007	Various	Division 7		Traffic Separation Study	To Be Requested			

RX-2000	Various	Statewide		Highway-Rail Grade Crossing Safety Improvements	To Be Requested			
RX-2007	Various	Division 7		Highway-Rail Grade Crossing Safety Improvements	To Be Requested			
RX-2007A	Various	Gibsonville	Springwood Avenue and NS Railroad	Active Warning Device Installation	NA	FY 2023		\$ 800,000
RX-2100	Statewide			Passenger Rail Crossing Safety	FY 2021-25			\$ 2,500,000
R-5753	Statewide			FLTP and ERFO Funds	FY 2022-25			\$ 32,700,000
Y-5807	Various	Division 7		Traffic Separation Study	To Be Requested			
Z-5807	Various	Division 7		Highway-Rail Grade Crossing Safety Improvements	To Be Requested			
P-5719	Piedmont Corridor	Division 7		Purchase and Refurbish Rail Cars	FY 2022, 24 and 25			\$ 212,528,000
P-5205	Piedmont Corridor	Alamance	Graham to Haw River	Siding and Curve Realignment	Under Construction			\$ 11,605,000
P-2918	Piedmont Corridor	Division 7	Piedmont Corridor Train 74/75. Operations added FY21	Equipment and Capital Yard Maintenance	In Progress			\$ 8,211,000

RESURFACING

2022						
WBS	Plan Year	Route Name	County	From Description	To Description	Length
	2022	US 70	001-Alamance	GCL	SR 1158	3.43
	2022	NC 100	001-Alamance	SR 1311 Ramp	NC 87	2.67
	2022	Lindley Mill Rd	001-Alamance	CCL	SR 1005	4.31
	2022	Snow Camp Rd	001-Alamance	SR 1005	NC 87	6.25
	2022	Greensboro Chapel Hill Rd	001-Alamance	SR 1003	NC 49	9.28
	2022	Bellemont-Mt. Hermon Rd	001-Alamance	SR 2321	NC 62	5.99
	2022	Tucker St	001-Alamance	SR 1148	NC 54	2.12
	2022	Silk Hope Rd	001-Alamance	RCL	CCL	0.3
	2022	York Rd	001-Orange	SR 1306	SR 1306	0.6
	2022	Konica Dr	001-Guilford	NC 61	END MAINT	0.6
	2022	Springwood Church Rd	001-Guilford	SR 3066	US 70	1.34

REVISIONS TO THE 2020-2029 STIP
HIGHWAY PROGRAM

BURLINGTON-GRAHAM URBAN AREA METROPOLITAN PLANNING ORGANIZATION

STIP MODIFICATIONS

* EB-5879 ALAMANCE PROJ.CATEGORY DIVISION	- BURLINGTON-GRAHAM URBAN AREA METROPOLITAN PLANNING ORGANIZATION	US 70 (NORTH CHURCH STREET), SR 1716 (GRAHAM-HOPEDALE ROAD) TO SR 1719 (SELLARS MILL ROAD) IN BURLINGTON. CONSTRUCT SIDEWALK. <u>ADD ENGINEERING IN FY 22 NOT PREVIOUSLY PROGRAMMED. TO ALLOW ADDITIONAL TIME FOR PLANNING. DELAY RIGHT-OF-WAY AND CONSTRUCTION FROM FY 22 TO FY 23.</u>	ENGINEERING	FY 2022 -	\$13,000	(TA5200)
				FY 2022 -	\$3,000	(L)
			RIGHT-OF-WAY	FY 2023 -	\$22,000	(TA5200)
				FY 2023 -	\$6,000	(L)
			CONSTRUCTION	FY 2023 -	\$53,000	(TA5200)
				FY 2023 -	\$13,000	(L)
					\$110,000	
* RX-2007A GUILFORD PROJ.CATEGORY DIVISION	- BURLINGTON-GRAHAM URBAN AREA METROPOLITAN PLANNING ORGANIZATION	SR 2748 (SPRINGWOOD AVENUE), NORFOLK SOUTHERN RAILROAD CROSSING 72290L IN GIBSONVILLE. INSTALL ACTIVE WARNING DEVICES. <u>ADD NEW PROJECT BREAK AT REQUEST OF RAIL DIVISION.</u>	CONSTRUCTION	FY 2023 -	\$800,000	(RR)
					\$800,000	

* INDICATES FEDERAL AMENDMENT

Thursday, February 3, 2022

REVISIONS TO THE 2020-2029 STIP
HIGHWAY PROGRAM

STATEWIDE PROJECT

STIP ADDITIONS

RC-2000 - STATEWIDE PROJECT
STATEWIDE
PROJ.CATEGORY
STATEWIDE

VARIOUS, TRAFFIC SEPARATION STUDY
IMPLEMENTATION AND CLOSURES PROGRAM
ADMINISTRATION
**ADD NEW PROJECT FOR PLANNING ONLY AT THE
REQUEST OF THE RAIL DIVISION.**

RX-2000 - STATEWIDE PROJECT
STATEWIDE
PROJ.CATEGORY
STATEWIDE

VARIOUS, HIGHWAY-RAIL GRADE CROSSING SAFETY
IMPROVEMENTS PROGRAM ADMINISTRATION.
**ADD NEW PROJECT FOR PLANNING ONLY AT THE
REQUEST OF THE RAIL DIVISION.**

STIP MODIFICATIONS

R-5753 - STATEWIDE PROJECT
STATEWIDE
PROJ.CATEGORY
EXEMPT

VARIOUS, FEDERAL LANDS TRANSPORTATION
PROGRAM (FLTP) AND EMERGENCY RELIEF FOR
FEDERALLY OWNED ROADS (ERFO). ROAD AND
BRIDGE IMPROVEMENTS TO BE CONSTRUCTED ON
TRANSPORTATION FACILITIES THAT ARE OWNED BY
THE FEDERAL GOVERNMENT THAT PROVIDE ACCESS
TO FEDERAL LANDS.
**ADD FUNDING IN FY 23, FY 24, AND FY 25 NOT
PREVIOUSLY PROGRAMMED AT THE REQUEST OF
THE FEDERAL HIGHWAY ADMINISTRATION.**

CONSTRUCTION

FY 2022 -	\$11,000,000	(FLTP)
FY 2023 -	\$11,200,000	(FLTP)
FY 2024 -	\$9,500,000	(FLTP)
FY 2025 -	\$1,000,000	(FLTP)
	<u>\$32,700,000</u>	

* INDICATES FEDERAL AMENDMENT

Thursday, February 3, 2022

CERTIFICATE: The undersigned certifies that the foregoing is a true and correct copy of a resolution adopted by the voting members of the TAC on _____, 2022.

Leonard Williams, Chair
Transportation Advisory Committee

STATE of: North Carolina
COUNTY of _____

I, _____, Notary Public of _____ County, North Carolina do hereby certify that Leonard Williams personally appeared before me on the ____ day of _____ 2022 to affix his signature to the foregoing document.

Notary Public My Commission expires: _____



RESOLUTION

ADOPTING THE FISCAL YEAR 22 SECTION 5307 URBANIZED AREA TRANSIT FUNDING SUBALLOCATION FORMULA DESIGNATED FOR THE BURLINGTON - GRAHAM URBANIZED AREA

WHEREAS, the Burlington – Graham Urbanized Area receives an apportionment of FTA Section 5307 Urban Transit Formula funds annually, and the City of Burlington is the Designated Recipient for Section 5307 Urban Transit Formula funds in our region with Alamance County Transportation Authority, GoTriangle, Link Transit, Orange County Public Transportation, and Piedmont Authority for Regional Transportation are eligible for a portion of Section 5307 FTA Urban Transit Funds as subrecipients to the City of Burlington; and,

WHEREAS, the Burlington – Graham Metropolitan Planning Organization (BGMP) completed the Section 5307 Urban Transit Formula Funding Suballocation Study to determine how to distribute FTA Section 5307 Urban Transit Formula funds apportioned to the Burlington - Graham urbanized area: and,

WHEREAS, the BGMP Transit Subcommittee approved the following percentages applied for distribution of annual apportionments to the Burlington – Graham Urbanized Area from Section 5307 FTA Urban Transit Formula Funds between eligible agencies: and,

BURLINGTON – GRAHAM URBANIZED AREA FY 22 SECTION 5307 SUBALLOCAITON SCHEDULE	
BGMP Transit Agencies	Percentages
Link Transit	53%
ACTA	26%
PART	16%
Orange	5%
GoTriangle	0%
Capital Reserves	0%
Total	100%

WHEREAS, the BGMP Metropolitan Planning Organization Transportation Advisory Committee has reviewed the recommendations provided by staff and the current recipients of Section 5307 FTA Urban Transit Formula funds,

NOW THEREFORE, BE IT RESOLVED that the Section 5307 Urban Transit Formula Funding made available to the BGMP Urbanized Area will be distributed to subrecipients based on the BGMP FY 22 Section 5307 Suballocation Percentages as listed above on this the _____ day of _____, 2022.

CERTIFICATE: I, Leonard Williams, Transportation Advisory Committee Chair, do hereby certify that the foregoing is a true and correct copy of a resolution adopted by the voting members of the Burlington-Graham Transportation Advisory Committee, duly held on the ____ day of _____, 2022.

Leonard Williams, Chair
Transportation Advisory Committee

STATE of: North Carolina
COUNTY of Alamance

I, _____, Notary Public of _____ County, North Carolina do hereby certify that Leonard Williams personally appeared before me on the ____ day of _____, 2022 to affix his signature to the foregoing document.

Notary Public

My Commission expires: _____

BGMPO Draft Section 5307 Suballocation Plan

The City of Burlington, as the Designated Recipient, in partnership with the Burlington-Graham Metropolitan Planning Organization (MPO), administers the Federal Transit Administration (FTA) Urbanized Area Formula (Section 5307) funds apportioned to the Burlington-Graham Urbanized Area (UZA). A UZA is a contiguous urban area with a population of 50,000 or more that meets criteria used in the FTA formula grant.

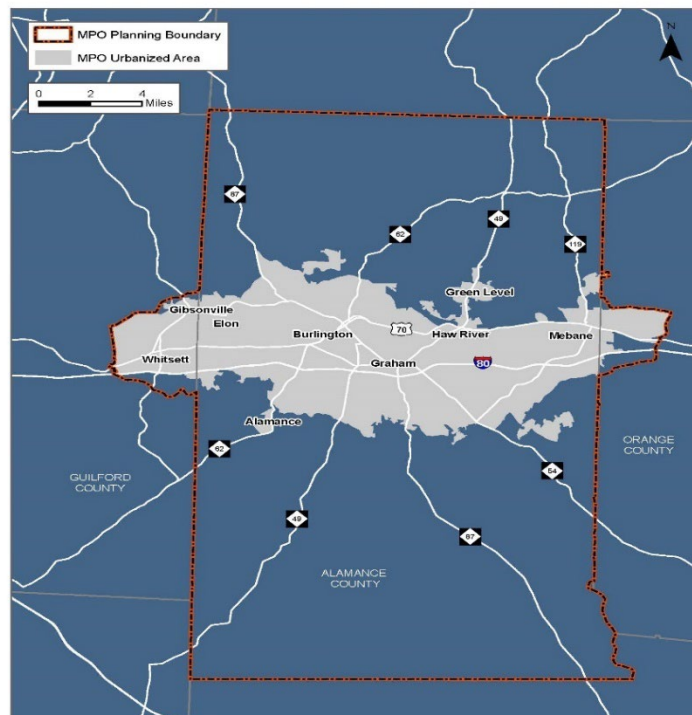
State's governors or the governors' designee performs the role of the designated recipient for UZAs under 200,00. Although the governor may authorize a local entity, such as a metropolitan planning organization, to develop and recommend funding allocations, the governor must approve the final allocation of program funds for these areas.

The BGMPO has the principal administrative responsibility for preparing the BGMPO UZA suballocation schedule, notifying eligible recipients, approving the schedule in order for FTA to generate the Section 5307 Split Letter.

BGMPO Urbanized Area

The Burlington Urbanized Area stretches through much of central Alamance County, to the north and south of the U.S. 70 and I-40 travel corridors and includes small portions of Guilford and Orange counties (Figure 1). The urbanized area nearly extends to the Greensboro urbanized area (to the west) and to the Durham urbanized area (to the east).

Figure 1. BGMPO Urbanized Area



Service Providers

Alamance County is served by five public transportation providers (Figure 2). These are:

- ACTA
- City of Burlington/Link Transit
- Piedmont Authority for Regional Transportation (PART)
- GoTriangle
- Orange Public Transportation

ACTA, Link Transit, and PART are the primary transit providers in the MPO service area of Guilford and Alamance counties. GoTriangle, Orange and the Piedmont Authority for Regional Transportation (PART) provides service in Orange County. The services provided by these operators in are described below:

Link Transit - Fixed route and ADA complementary paratransit for the City of Burlington, the Town of Gibsonville and Alamance Community College. The system is managed by the City of Burlington and operated by TransDev through a contractual arrangement.

PART - Regional express bus service includes the Route 4 (Alamance Burlington Express), which travels through Alamance County, providing service between Greensboro and Chapel Hill, with Alamance County stops at the Alamance Regional Park and Ride, the Graham Park and Ride, Alamance Community College, and the Cone Health Park and Ride.

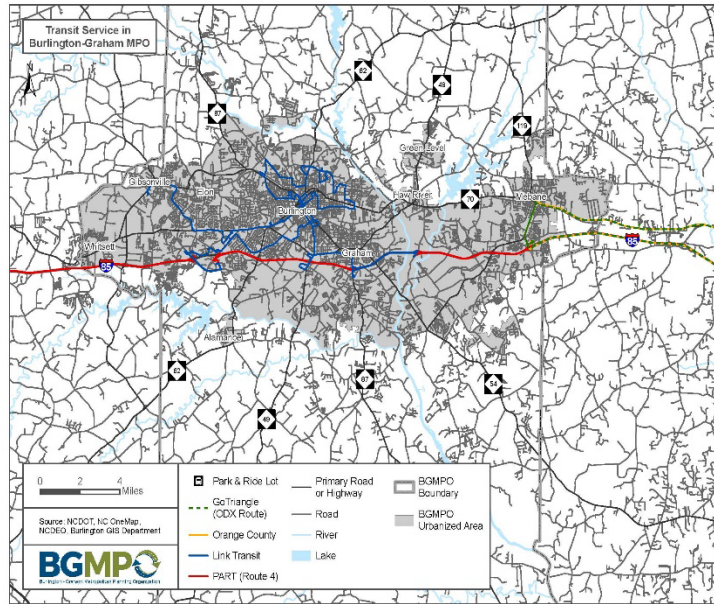
GoTriangle - GoTriangle is a regional public transportation agency that serves Wake, Durham, Orange, and Alamance Counties. In addition to regional bus operations, GoTriangle offers the following resources: Paratransit services, Ride matching and vanpools; and Emergency ride home program. The commuter bus route, the Orange County Durham Express (ODX), provides service between Mebane and Durham. This route connects with PART's Route 4 at the Cone Health Park and Ride in Mebane.

Orange County Public Transit - provides public transportation in Orange County. Three fixed routes are offered, as well as specialized services for senior citizens and people with disabilities. Mebane is served via one of the three Orange County fixed routes, termed the Orange-Alamance Connector.

ACTA - Alamance County Transportation Authority (ACTA) is a single county public transportation authority that operates demand response transportation throughout Alamance County and to out-of-county locations for specific contractual trips. ACTA provides general public transportation services, as well as providing service under contract for several programs. ACTA serves both rural and urbanized areas, including some of the same areas that are served by Link Transit. ACTA also connects with the Piedmont Authority for Regional Transportation (PART), when possible.

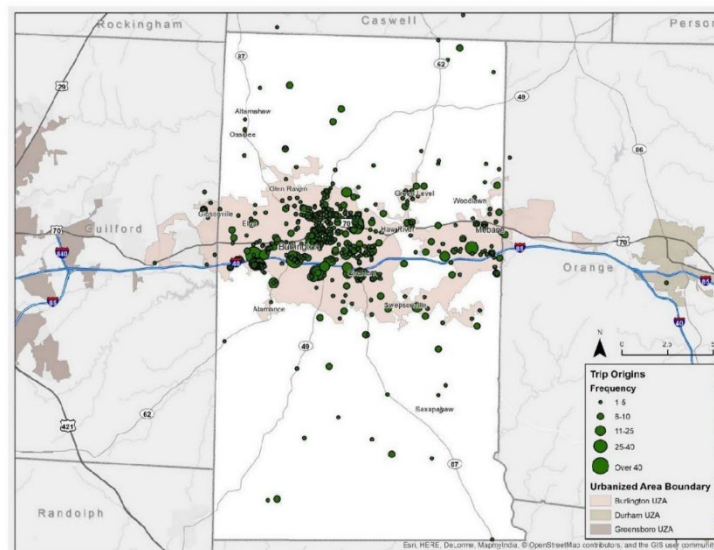
Figure 2 is a map of the fixed transit routes superimposed over the urbanized area. As the map shows, there are relatively dense areas that do not currently enjoy fixed route transit service. This relatively large (geographically) urbanized area, with limited densities, contributes to a development pattern that is somewhat dispersed, requiring longer trips to get from origin to destination than would be required in an area with a more compact development pattern.

Figure 2. BGMPO Transit System Map



According to ACTA's 2018 Community Connectivity Plan, ACTA service demand area includes both rural and urbanized areas, including some of the same areas that are served by Link Transit. ACTA also connects with the Piedmont Authority for Regional Transportation (PART), when possible. The urban-rural split for ACTA ridership is about 74% urban and 26% rural. Figure 3 illustrates the trip origins and show that the majority of origins are within the Burlington Urbanized Area¹.

Figure 3. ACTA Trip Origins 2017



¹ Alamance County Transportation Authority (ACTA) Community Connectivity Plan July 2018 Final Report

Section 5307 Allocation Methodology

In lieu of explicit guidance regarding sub-allocation methodology, the BGMPO developed the Section 5307 funding suballocation methodology to fund public transportation projects deemed most essential to the region and consistent with regional short- and long-range transportations plans and objectives. The objectives are to:

- Maintain reasonable fairness to all operators.
- Consistency with federal and state requirements, adopted transportation plans, financial plans and TAM plans; and, Funding operational needs and basic capital requirements based on previous apportionments and future needs.

FTA Transit Administration Formula

The suballocation for the BGMPO UZA is determined by applying the FTA's national apportionment formula for Section 5307 as defined by the Fixing America's Surface Transportation (FAST) Act. These formulas consider:

- Population (from most recent Decennial Census)
- Population Density (Persons Per Square Mile based on most recent Decennial Census)

The suballocation will employ the most recent U.S. Census population counts from the most recent decennial census for the Urbanized Area, and the FTA approved National Transit Database (NTD) service measures which were used to determine the national apportionments. This funding scenario recreates the FTA urbanized area program formula to determine allocation of Section 5307 funding.

Population Density

Population density often determines the type of public transportation service that is feasible in an area. Typically, an area with a density greater than 2,000 persons per square mile will be able to sustain frequent daily fixed route bus service. Whereas, an area with a population density below 2,000 persons per square mile may be better suited for deviated fixed route, flex schedule, or dial-a-ride service². Population density is the number of people per square mile. The formula for calculating density is: Population Density = Population / Land Area (square mile) The City of Burlington and to a lesser extent Mebane are areas of higher density within Alamance County, though none have Census block groups with population densities over 2,000 persons per square mile. A 3/4-mile service demand radius was used to capture the estimate fixed route service demand (Figure 4)

BGMPO Park and Ride Lot Demand Estimation

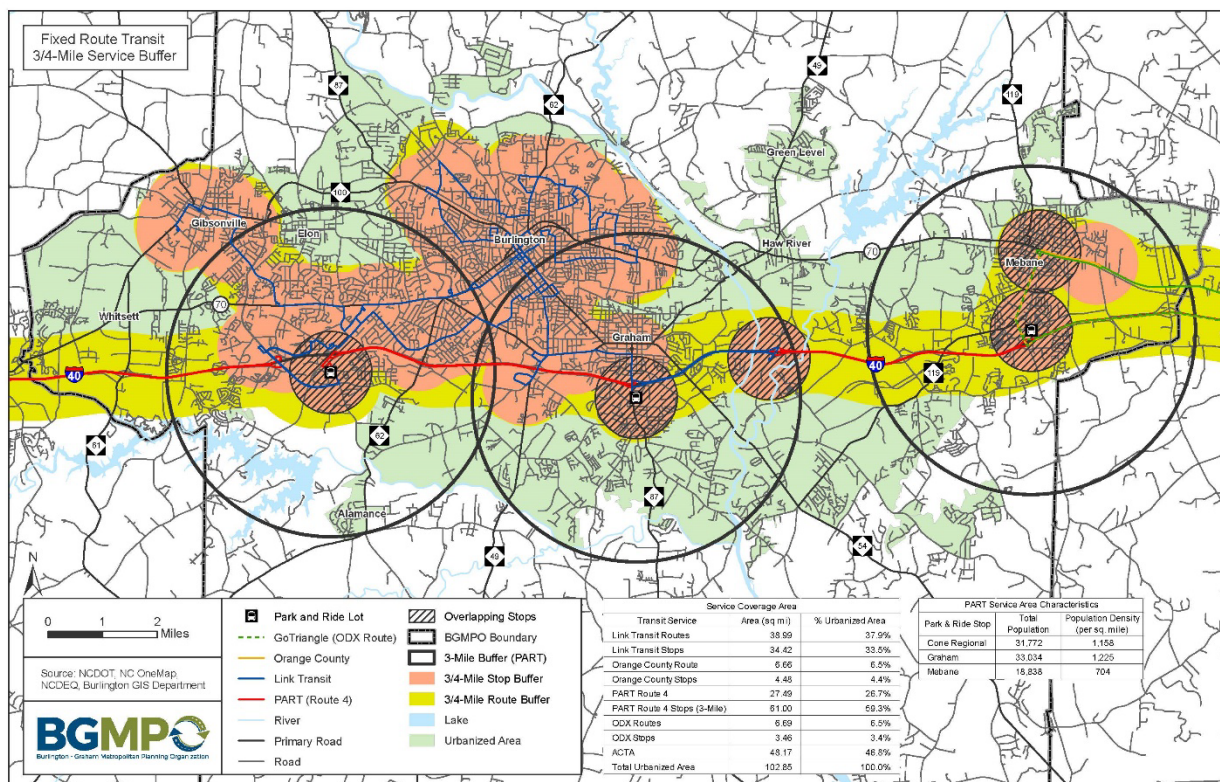
Park and Ride lots within the BGMPO service area are classified as suburban lots. According to the American Association of State Highway and Transportation Officials (AASHTO), suburban park-and-ride lots are defined as lots that are typically between 4 and 30 miles from their primary and that provide an

² ACTA CCP

intermodal or change-of-mode service. The predominant modal interchange is typically between the private automobile and transit mode, but may include modal changes between transit and bicycle, pedestrian, carpool, vanpool, or drop-and-ride modes, as well. Transit modes that may be offered at the facility include: express and local bus transit, rail (heavy, light, commuter, and intercity), ferries, and paratransit.

The approaches for developing demand forecasts are commonly based on regional modeling approaches and site-specific forecasting tools, tailored to the metropolitan region or “rules of thumb”. Studies indicate that 98% of park-and-ride users access such facilities for home-to work commute trips and that the primary home influence area probably extends 3- to 5-miles from the individual park-and-ride facility, but is strongly influenced by such factors as the presence of competing lots, the distance to the primary destination activity center, and the existence of unique conditional characteristics such as downstream traffic congestion.³ Thus, park-and-ride lots immediately upstream of anticipated traffic congestion tend to demonstrate high levels of demand, whereas lots further away from the anticipated congestion usually demonstrate less significant demand. As the park-and-ride lots located in the BGMPO are further away from their destinations, a 3-mile buffer demand radius was used to estimate demand.

Figure 3. Transit Service Demand Buffers



³ 1995 William Barclay Parsons Fellowship Parsons Brinckerhoff Monograph 11 Robert J. Spillar, P.E. Lead Transportation Engineer Parsons Brinckerhoff Quade & Douglas, Inc. October 1997 Park-and-Ride Planning and Design Guidelines

FY 22 Section 5307 Suballocations Percentages

For the UZAs with population less than 200,000 (small urbanized areas), the Section 5307 funding amount by transit system is the sum of population allocation, weighted population density allocation and low income population allocation (Figure 5). **UZA Allocation Less than 200,000 = UZA Population + Population Density Share + UZA Low Income Population.**⁴

Figure 5. Suballocation Inputs and Percentages

Section 5307 Suballocation Inputs and Percentages (ACS estimates)					
Urban Transit System	UZA Population	Area	Population Density (p/sq mi)	Low Income Population	Suballocation Percentages
Burlington MPO	119,911	90 sq. miles	1,326	34,916	
Link Transit (Alamance)	49,843		2,116.43	14,327	
Link Transit (Guilford)	639		1,018.23	186	
Orange Public Transportation	2,270		375.99	661	
GoTriangle	2,270		375.99	661	
ACTA*	58,767		1,076.31	17,112	50%
PART*					15%
ARMC					
Graham					
Mebane					
Total					100%

PART and GoTriangle fall into the funding category of “large urban” systems, and their NTD data are respectively included in the Greensboro and Durham Direct Recipient NTD reporting. EJScreen and the resulting American Community Survey (ACS) data were used to estimate demand based on population, population density and low-income population in the manner described above.

In the event a BGMPPO Section 5307 recipient opts out of receiving its annual suballocation, the funds will be redistributed among the remaining transit agencies and/or set aside in the region’s capital reserves account. For FY 22, GoTriangle did not request Section 5307 formula funding and its proportional share percentage of 5% was redistributed among the remaining transit agencies.

⁴ 5307/5340 FTA Funding Allocations for NC Transit Systems Within Urbanized Areas February 2016 James Ritchey, Whitman Requardt & Associates Kai Monast, Institute for Transportation Research and Education

The FY 22 Section 5307 formula fund suballocation will be used for splitting Small Urban Section 5310 and 5339 funds as allocated by NCDOT to BGMPO unless a transit agency opts out of that funding. The BGMPO will evaluate its Section 5307 funding suballocation methodology and percentage distribution on an annual basis.

Figure 6. FY 22 Section 5307 Suballocation Percentages

BGMPO Transit Agencies	CARES Act Funds	Percentages	5307 American Rescue Plan Act (ARPA) Funds	Percentages	FFY2021 5307 Suballocations	Percentages	FY 22 5307 Suballocation Percentages ^{1,2}
Link Transit	\$3,115,653	50%	\$372,287	50%	\$1,086,780	49%	53%
ACTA	1,407,700	22%	163,806	22%	353,293	16%	26%
PART	1,256,487	20%	148,914	20%	245,691	11%	16%
Orange	502,594	8%	59,566	8%	107,602	5%	5%
GoTriangle	0	0%	0	0%	0	0%	0%
Capital Reserves	0	0%	0	0%	448,341	19%	0%
Total	\$6,282,434	100%	\$744,573	100%	\$2,241,707	100%	100%

¹Percentages were weighted to discount overlaps/duplications in service and population

² GoTriangle opted for redistribution of their allocation resulting in a revised split for each of the participating transit agencies **for FY 22 only**.

Capital Reserve Funding

Due to regional growth and escalating operation costs, the gap between available funding and the funds needed to sustain and expand regional transit services has widen in recent years and is expected to grow. The CARES Act, American Rescue Plan and the Bipartisan Infrastructure Bill will provide supplemental funding to balance the costs of operations in the short-term. However, funding assistance for transit capital projects is limited and some agencies use their operation funds to purchase or replace needed equipment and vehicles. For FY 22, the Transit Subcommittee decided to forgo allocation to the capital reserve fund. Allocating funds to the capital reserves line item will be evaluated on an annual basis. Without a local dedicated source of funding, the transit agencies that provide primary service within Alamance County may be forced to cut service, defer maintenance and capital improvements, and the purchase of replacement vehicles. Service cuts will have devastating impacts to those that rely on transit every day to reach jobs, schools, medical appointments, and social services.

Mebane Park & Ride Feasibility Study



Kimley»Horn

Tuesday, February 15, 2022

Agenda

- Background
- Parcel Search Process
- Evaluation Criteria
- Concept Designs
- Planning Level Cost Estimates

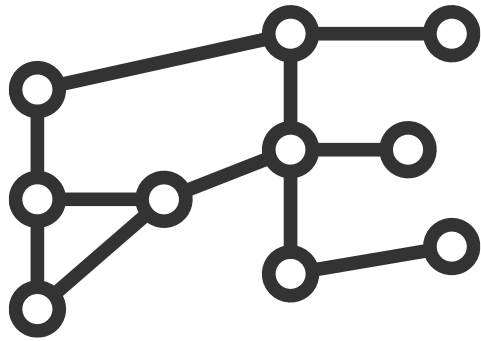




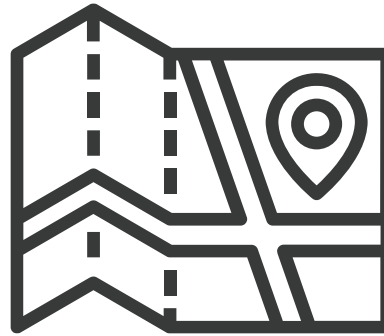
Background

Project Purpose

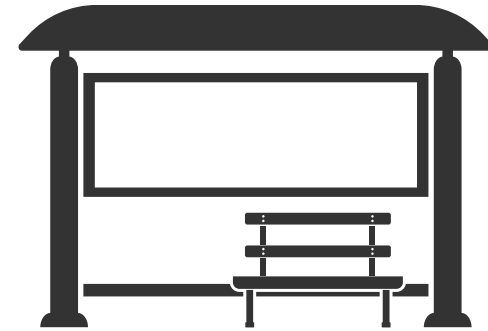
- Feasibility study to identify a new Park & Ride site to replace the existing site with considerations for:



Current and
planned routes



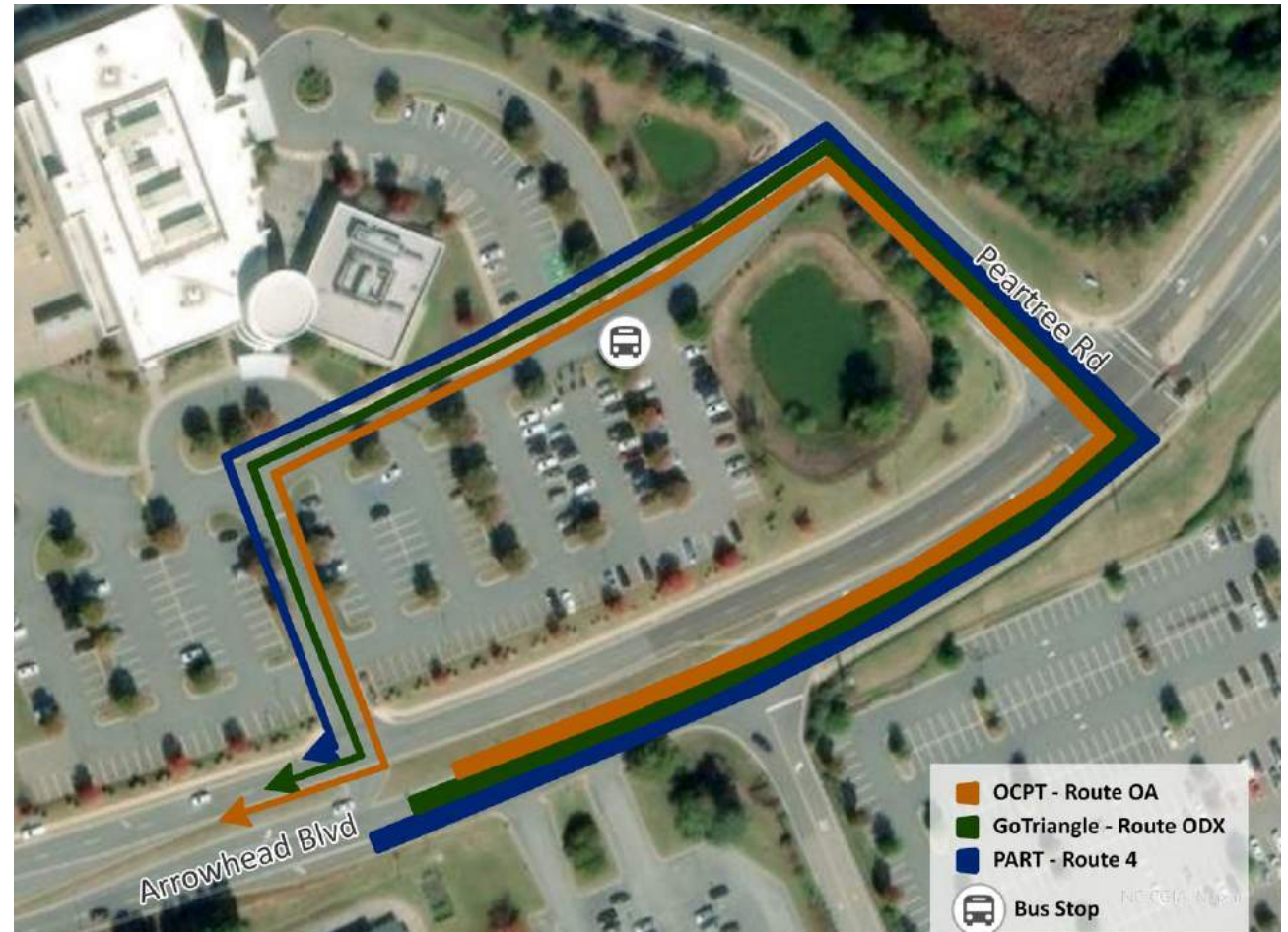
Surrounding
land use



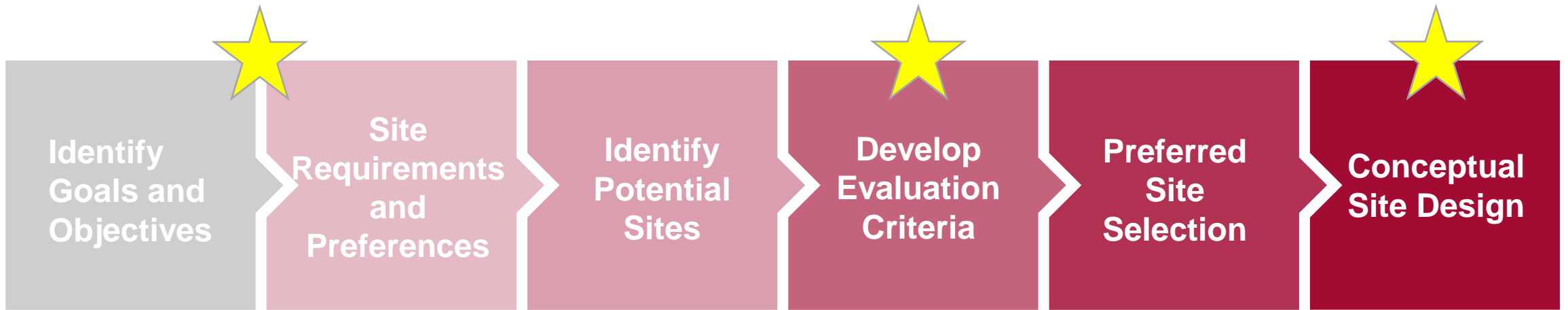
Site
improvements

Existing Conditions

- Located at Mebane Cone Health MedCenter
- Only Park & Ride in Mebane
- 50 spaces
- Served by:
 - GoTriangle
 - PART
 - OCPT



Project Process



 = *project milestone and stakeholder meeting*



Search Process

Initial Parameters

Along the I-40/I-85 corridor between the I-40/I-85/Mebane Oaks Rd and I-40/ I-85/Buckhorn Rd Interchanges

- Within .5 mile drive from interchanges

Within Mebane city limits

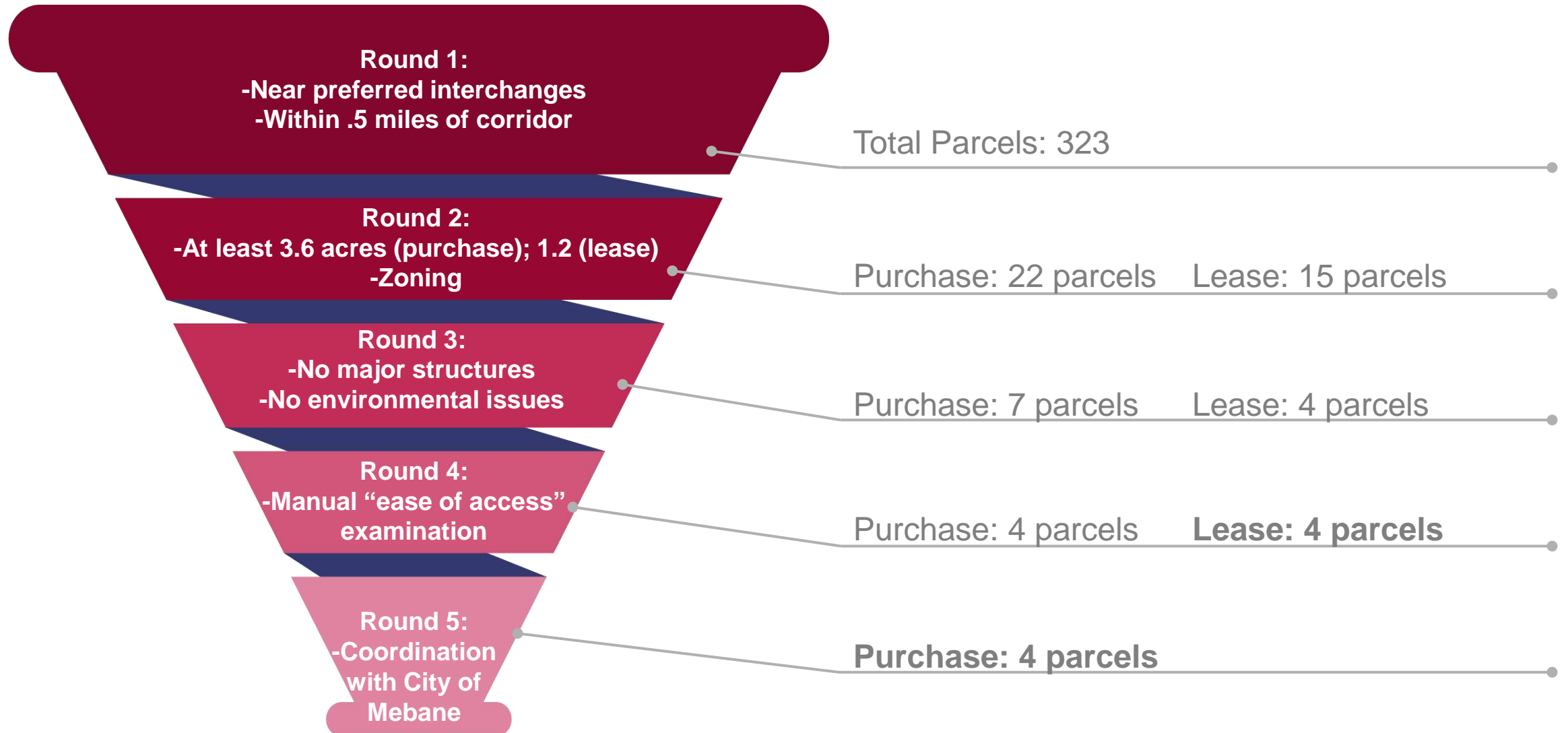
- Near the Alamance and Orange County line

Close to commercial and retail corridors

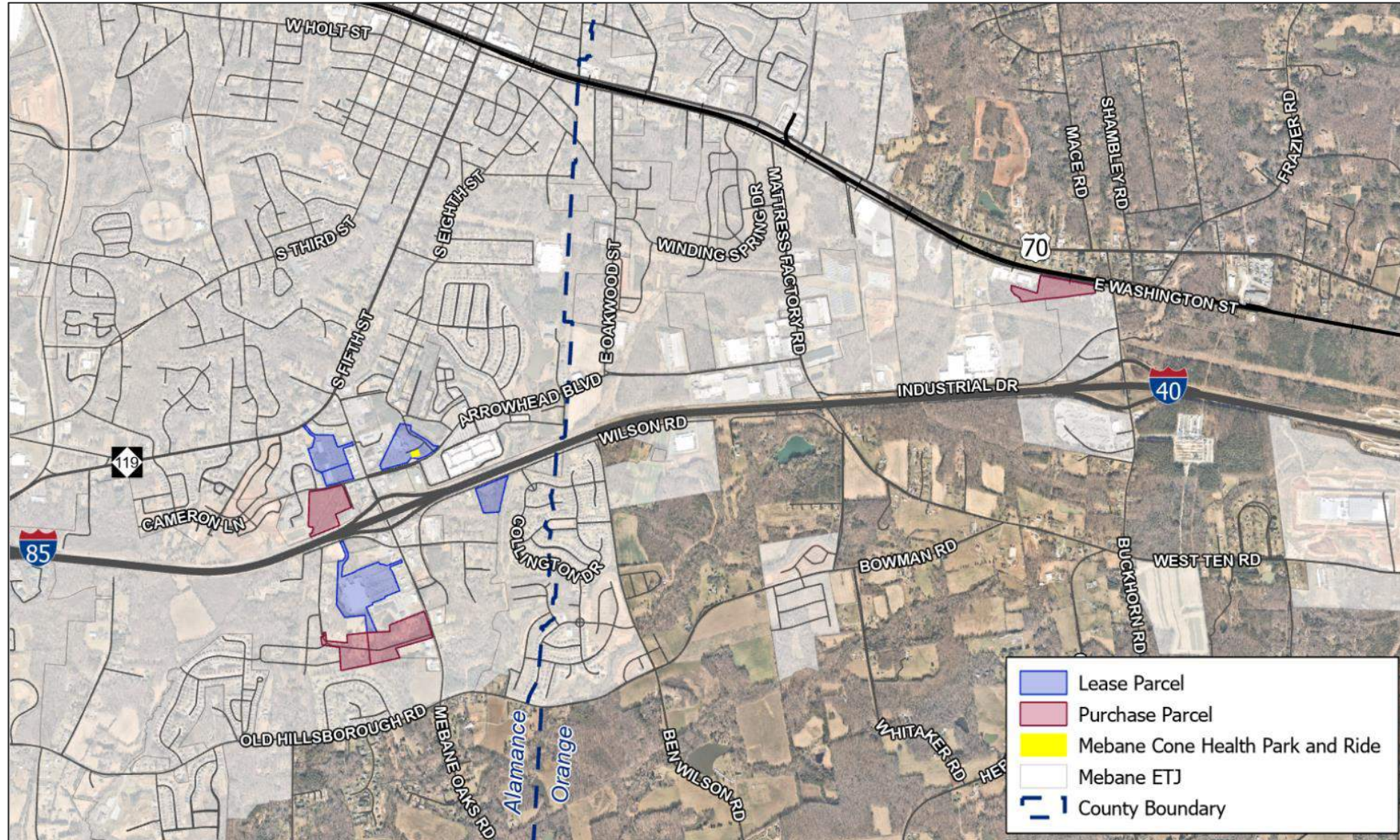
Support existing and future service

- PART, GoTriangle, Orange County Public Transportation, and Future Mebane Transit Service

Parcel Search Rounds



Final Pool of Sites





Evaluation Criteria

Evaluation Matrix

Matrix Framework - [Purchase/Lease] Parcels		Parcels							
		Purchase Parcels				Lease Parcels			
		Parcel No. 1	Parcel No. 2	Parcel No. 3	Parcel No. 4	Parcel No. 1	Parcel No. 2	Parcel No. 3	Mebane Cone Health
Goals	Criteria	9834292604	9814846908	9824020553	9814921385	9814934523	9814865075 & 9814857683	9824157325	9824061200
Mobility	Travel time to I-40/I-85 eastbound	5	4	5	4	5	5	5	4
	Travel time to I-40/I-85 westbound	5	5	4	5	5	5	4	5
	Travel time to Downtown Mebane Bus Stop	3	3	1	1	1	3	3	3
	Ease of bus access to site from interstate	1	5	5	3	5	1	3	5
	Internal site navigability (lease only)	N/A	N/A	N/A	N/A	3	3	3	5
Opportunity	Land use within 1 mile	1	5	1	1	5	3	1	5
	Parcel Zoning	5	5	5	1	3	5	5	1
	Potential for new future development nearby	3	5	1	1	5	5	1	5
Viability	Existing structures (purchase only)	5	5	1	1	N/A	N/A	N/A	N/A
	Estimated market cost per acre	5	4	3	5	2	2	4	1
	Listed for sale (purchase only)	1	1	1	1	N/A	N/A	N/A	N/A
Community	Total population within 1 miles	1	5	3	3	3	5	4	4
	Minority population within .25 miles	3	3	1	1	3	5	3	4
	Hispanic/Latino population within .25 miles	5	3	1	1	3	4	3	3
	Low-income population in parcel block group	3	5	5	5	5	5	5	3
	Zero vehicle households in parcel block group	3	5	5	5	5	5	5	1
Mobility Score	Score	14	17	15	13	19	17	18	22
	Total Possible	20				25			
Opportunity Score	Score	9	15	7	3	13	13	7	11
	Total Possible	15				15			
Viability Score	Score	11	10	5	7	2	2	4	1
	Total Possible	15				5			
Community Score	Score	15	21	15	15	19	24	20	15
	Total Possible	25				25			
Total Score	Total Score	49	63	42	38	53	56	49	49
	Total Possible	75				70			

Identified Parcels: Lease

Lease Parcel No. 1



Acreage: 20.82 acres

Zoning:

- **Parcel:** Conditional Use – General Business (CU-B2)
- **Surrounding:**
 - General Business District (Conditional) (B-2(CD))
 - Residential District (R-6, R-8, R-20)

Lease Parcel No. 2



Acreage: 12.39 acres

Zoning:

- **Parcel:** General Business District (B-2)
- **Surrounding:**
 - General Business District Zoning (B-2)
 - Residential District (R-6, R-8, R-12, R-20)
 - Office and Institutional District (Conditional) (O&I-CD)

Identified Parcels: Lease

Lease Parcel No. 3



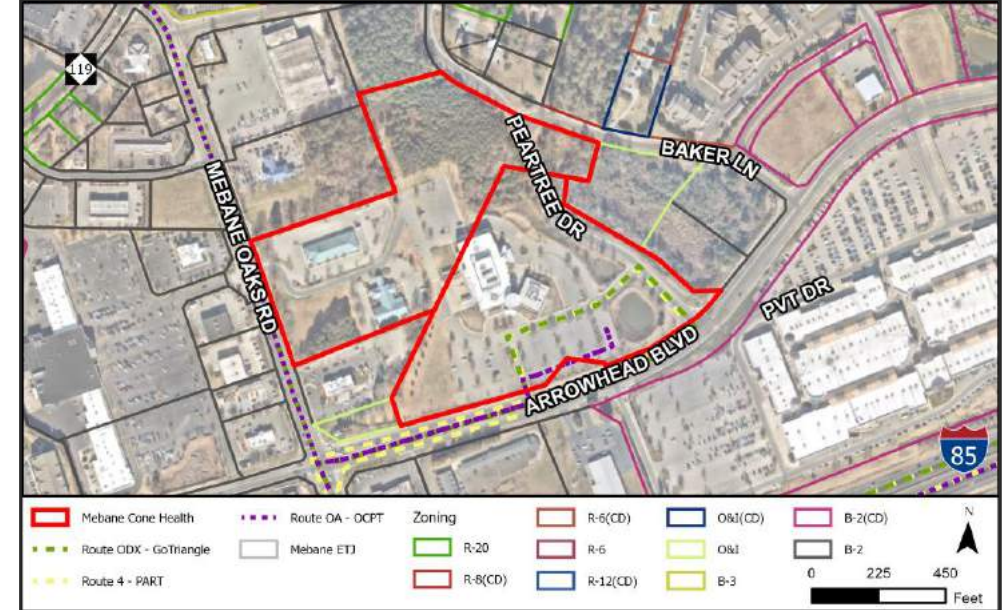
Acreage: 5.83 acres

Zoning:

- **Parcel:** General Business District (B-2)
- **Surrounding:**
 - General Business District (Conditional) (B-2(CD))
 - Residential District (R-12, R-20)

Additional Consideration: Parcel in development to be a bookstore

Mebane Cone Health



Acreage: 21.9 acres

Zoning:

- **Parcel:** Office and Institutional (Conditional) (O&I (CD)) and General Business District (B-2)
- **Surrounding:**
 - General Business District Zoning (Conditional) (B-2, B-3 (CD))
 - Residential District (Conditional) (R-6, R-8, R-12, R-20) (CD)
 - Office and Institutional District (Conditional) (O&I-CD)

Identified Parcels: Purchase

Purchase Parcel No. 1



Acreage: 9.82 acres

Zoning:

- **Parcel:** Heavy Manufacturing (M-1)
- **Surrounding:** Residential District (R-20)

Assessed Value: \$164,800 (2020)

Additional Consideration: Orange County considering expanding utilities north of the interchange

Purchase Parcel No. 2



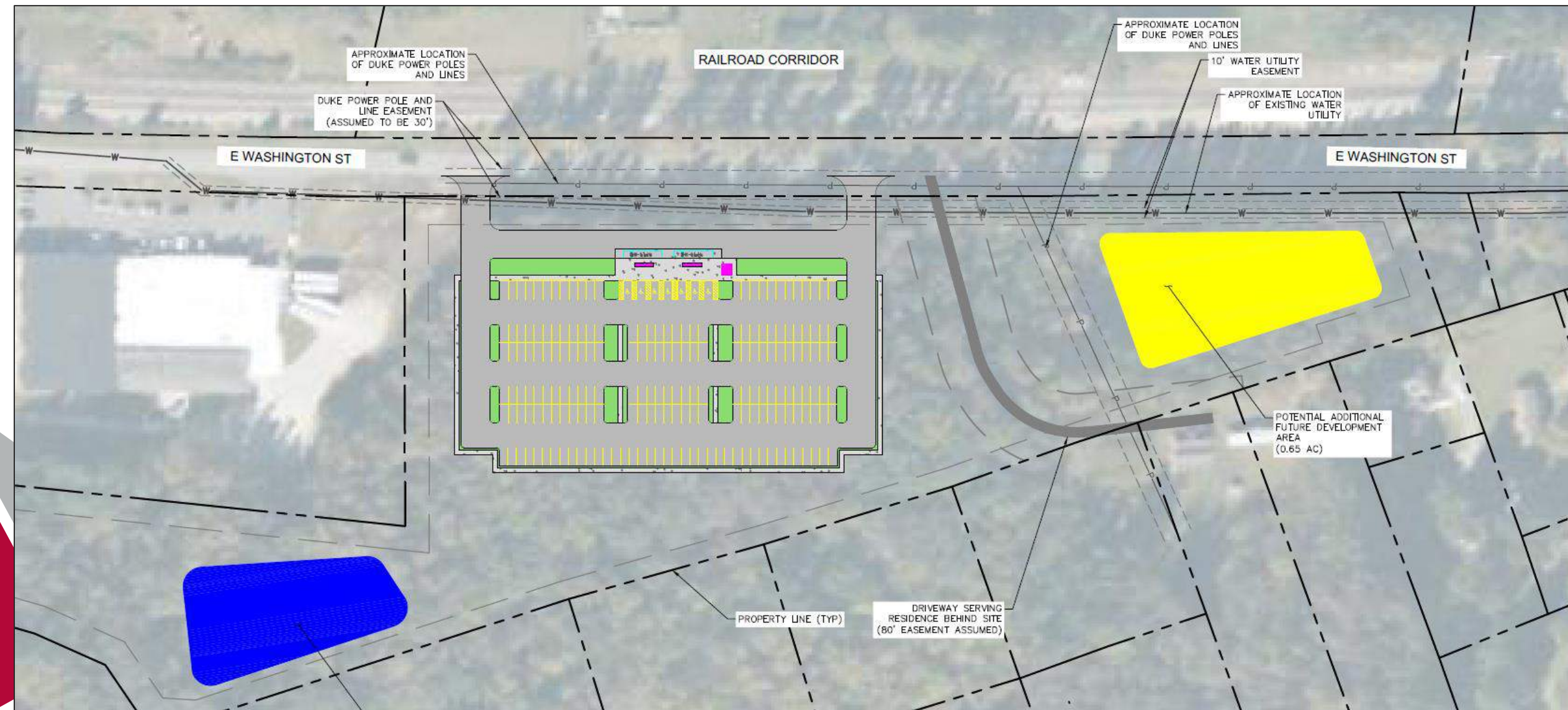
Acreage: 11.88 acres

Zoning:

- **Parcel:** General Business District (B-2)
- **Surrounding:**
 - Residential District (R-20, R-6)
 - Office and Institutional District (Conditional Use) (O&I-CD)
 - Conditional Use – General Business (CU-B2)

Assessed Value: \$722,250 (2017)

Full Site Layout – Final Preferred Purchase Site (Parcel #1)



Cost Estimate

Construction	Land acquisition	Design/Professional Services
\$4,000,000	\$165,000	\$600,000

*Land acquisition amount based on 2020 total assessed value

Questions?



Thank you!



Kimley»Horn



U.S. Department
of Transportation
**Federal Highway
Administration**

North Carolina Division

February 7, 2022

310 New Bern Avenue, Suite 410
Raleigh, NC 27601
(919) 856-4346
(919) 747-7030
<http://www.fhwa.dot.gov/ncdiv/>

In Reply Refer To:
HDA-NC

Mr. Leonard Williams
Mayor, Town of Gibsonville
TAC Chairman
Burlington-Graham MPO
507 Cook Road
Elon, NC 27244

Subject: Federal Highway Administration/Federal Transit Administration Review of
the Burlington-Graham Urban Area Metropolitan Planning Organization's
Transportation Planning Process

Dear Mayor Williams:

While Title 23 Highways; Code of Federal Regulations Part 450 – Planning Assistance and Standards Subpart C; Metropolitan Transportation Planning and Programming (23 CFR 450) does not direct Federal Highway Administration – North Carolina Division / Federal Transit Administration - Region 4 (FHWA/FTA) offices to conduct joint a Federal Certification Reviews (FCR) in Non-Transportation Management Area (Non-TMA) Metropolitan Planning Organizations (MPOs), FHWA/FTA have chosen to do so to review compliance of the transportation planning process.

The Federal certification review team will consist of the FHWA North Carolina Division Office and the Federal Transit Administration Region-4 personnel. The North Carolina Department of Transportation will also participate.

The review of the MPO's planning process will take place either virtually or on-site on April 7, 2022. We would also like to offer you, the other MPO board members, as well as the Technical Coordinating Committee (TCC) the opportunity to share your feedback with the review team on the MPO's planning process. If members of your committees wish to provide feedback, please work with your staff to determine an appropriate time.

The Federal team will send a brief report out to summarize some of the draft findings after the completion of the site visit. Suzette Morales (FHWA) will be leading the review with assistance from Parris Orr (FTA) and other members from the review team. Please do not hesitate to contact Ms. Morales if you have any questions. She can be reached at (919) 747-7531 or via e-mail at suzette.morales@dot.gov.

Sincerely,

A handwritten signature in black ink, consisting of a large, stylized 'J' followed by a series of loops and a long horizontal stroke.

For John F. Sullivan, III, P.E.
Division Administrator

cc:

Wanetta Mallette, MPO Administrator

Blake Cashmore, MPO Transportation Planner

NCDOT PROJECTS LOCATED IN BGUMPO - UNDER DEVELOPMENT

TIP/WBS #	Description	Let/Start Date	Completion Date	Cost	Status	Project Lead
SS-4907BQ 44757.1.1 44757.2.1 44757.3.1	Intersection improvements (All Way Stop) at SR 1005 (Greensboro-Chapel Hill Road) at SR 2369 (Sylvan School Road) and SR 2371 (Pleasant Hill Road) in Snow Camp .	5/1/21	Jun. 2021	\$22,500 R/W \$153,000 CON	4-way stop installation and flasher completed 4/17/18, utility relocations complete, widening delayed to Spring 2022	Derek Dixon
48798	Installation of crosswalks and pedestrian signals and update curb ramps at the intersection of US 70 (South Church Street) and Edgewood Avenue (non-system) in Burlington .	8/4/21	Jul. 2022	\$150,394	Construction Underway - Signal upgrade completed, pavement markings remain to be completed	Dawn McPherson Derek Dixon
47786 SM-5707B 47903.2.1	Intersection improvements on SR 1007 (Mebane Oaks Rd) at SR 2126/2128 (Old Hillsborough Rd) south of Mebane . Improvements include addition of left and right turn lanes, radii widening, signal installation, resurfacing, and pavement markings.	4/27/2022	Aug. 2022	\$898,500	Design complete, ROW acquisition underway - 100% complete with right of entry, Utility relocations underway	Chad Reimakoski Derek Dixon
U-6010 47145.1.1 47145.2.1 47145.3.1	Intersection improvements at US 70 (South Church Street) and SR 1226/SR 1311 (University Drive) in Burlington	4/19/22	FY 2024	\$8,400,000	Planning and design activities underway, ROW acquisition complete, Utility relocations underway	Brian Ketner
B-5728 45684.1.1 45684.2.1 45684.3.1	Replace Bridge #112 over Reedy Fork Creek on NC87 in Ossipee	4/19/22	FY2025	\$6,200,000	Planning and design activities complete - ROW complete	Kevin Fischer
SS-6007AE 49822.1.1 49822.3.1	Convert intersection from two way stop to all way stop at SR 1005 (E. Greensboro Chapel Hill Road) at SR 2351 (Bethel South Fork Road) in Snow Camp.	Jun. 2022	FY2023	\$30,000	Planning and design activities underway	Dawn McPherson
W-5707D 44853.1.4 44853.2.4 44853.3.4	Safety Improvements to curve on NC 49 located between Buckingham Mountain Road and SR 2363 (Beale Road) in Snow Camp	6/16/22	Nov. 2022	\$450,000	Planning and design activities underway; ROW acquisition underway	Chad Reimakoski

NCDOT PROJECTS LOCATED IN BGUMPO - UNDER DEVELOPMENT

TIP/WBS #	Description	Let/Start Date	Completion Date	Cost	Status	Project Lead
W-5807B 48952.1.3 48952.2.3 48952.3.3	Installation of ADA curb ramps and pedestrian accessible signals on SR 1301 (Boone Station Drive) at SR 1301 (St. Marks Church Road) and Boone Station Drive (non-system) at Glidewell Road/Tiki Lane (non-system) in Burlington	Aug. 2022	FY2022	\$75,000	PE funds scheduled to be released 2/2/21 - Construction Underway - Signal update completed, audible pedestrian button and pavement markings remain to be completed	Dawn McPherson Chad Reimakoski
U-6017 47162.1.1 47162.2.1 47162.3.1	Intersection improvements at NC 54 (East Harden St.) and NC 49 (East Elm St.) in Graham	6/15/23	FY2025	\$2,100,000	Planning and design activities underway - ROW underway	Rob Weisz
U-5844 50234.1.1 50234.2.1 50234.3.1	Construct multi-lanes on NC62 from SR 1430 (Ramada Road) to US 70 (South Church Street) in Burlington	3/18/25	FY2028	\$10,000,000	Planning and design activities underway - Public Meeting upcoming - will provide when date is set	Rob Weisz
U-6013 47158.1.4 47158.2.4 47158.3.4	Widen NC 119 to multi-lanes from SR 1981 (Trollingwood-Hawfields Rd)/ SR 2126 (Old Hillsborough Rd) to Lowes Blvd (non-system) in Mebane .	12/19/23	FY2026	\$6,200,000	Planning and design activities underway	Rob Weisz
U-6014 47159.1.1 47159.2.1 47159.3.1	Widen SR 1716 (Graham-Hopedale Rd) to multi-lanes with Bicycle/Pedestrian accommodations from SR 1720 (West Hanover Rd) to Morningside Drive in Burlington	3/18/25	FY2027	\$13,200,000	Planning and design activities underway, Includes EB-5882	Rob Weisz
U-6011 47146.1.1 47146.2.1 47146.3.1	Intersection improvements at US 70 (South Church Street) and SR 1158 (Huffman Mill Rd) in Burlington	8/20/24	FY2026	\$2,400,000	Planning and design activities underway - ROW acquisition pending	Brian Ketner
B-6052 48709.1.1 48709.2.1 48709.3.1	Replace bridge 68 over NCRR / Norfolk Southern Railroad on SR 1928 (Trollingwood Road) in Haw River	1/20/26	FY2027	\$2,500,000	PE funding approved 5/6/19	Kevin Fischer
I-6009 47962.1.1 47962.2.1 47962.3.1	Interchange improvements at I-40/I-85 and SR 1158 (Huffman Mill Road). Construct additional right turn lane on I-40 WB Ramp and improve operations at SR 1308 (Garden Road) intersection in Burlington	6/27/29	FY2031	\$936,000	PE funding approved 6/5/18	Brian Ketner

NCDOT PROJECTS LOCATED IN BGUMPO - UNDER DEVELOPMENT

TIP/WBS #	Description	Let/Start Date	Completion Date	Cost	Status	Project Lead
U-6009 47144.1.1 47144.2.1 47144.3.1	Widen and construct center turn lane on US70 (West Church St) from Tarleton Ave. to Fifth Street in Burlington	1/1/40	FY2040	\$6,337,000	Planning and design activities on hold	Rob Weisz
I-6059 48689.1.1 48689.2.1 48689.3.1	Interchange improvements at I-40/I-85 and SR 1981 (Trollingwood-Hawfields Road) in Mebane	1/1/40	FY2040	\$12,400,000	PE funding scheduled for 12/4/24	Laura Sutton

North Carolina Department of Transportation

Active Projects Under Construction - Alamance Co.

Contract Number	TIP Number	Location Description	Contractor Name	Resident Engineer	Contract Bid Amount	Availability Date	Completion Date	Work Start Date	Estimated Completion Date	Progress Schedule Percent	Completion Percent
C203844	U-3109A	NC-119 RELOCATION FROM I-40/85 TO SR-1921 (MEBANE ROGERS RD/ STAGE COACH RD).	THALLE CONSTRUCTION CO., INC.	Howell, Bobby J	\$45,389,069.36	6/26/2017	1/28/2021	8/3/2017	1/31/2022	100.00	93.10
C204106	U-3109B	NC-119 RELOCATION NORTH OF SR-1921 (MEBANE ROGERS RD) TO SOUTH OF SR-1918 (MRS WHITE RD).	THALLE CONSTRUCTION CO., INC.	Howell, Bobby J	\$8,151,660.80	8/27/2018	11/28/2020	10/4/2018	5/15/2022	100.00	87.30
C204111	U-6015	BURLINGTON - GRAHAM SIGNAL SYSTEM	ALS OF NORTH CAROLINA LLC	Howell, Bobby J	\$7,938,392.20	10/29/2018	8/15/2021	2/11/2019	2/28/2022	100.00	86.83
C204603	I-5711	I-40/I-85 AND SR 1007 (MEBANE OAKS ROAD) IN MEBANE INTERCHANGE IMPROVEMENTS	ZACHRY CONSTRUCTION CORPORATION	Howell, Bobby J	\$12,865,732.71	4/26/2021	1/11/2024	4/26/2021	1/11/2024	17.00	19.27
C204626		RESURFACE 1 SECTION OF NC 87, 1 SECTION OF NC 49 AND 21 SECTIONS OF SECONDARY ROADS	FSC II LLC DBA FRED SMITH COMPANY	Lorenz, PE, Kris	\$4,639,570.37	6/3/2021	11/1/2022	6/28/2021	11/1/2022	23.50	15.23
DG00407		REPLACE BRIDGE #444 ON SR 1768 (HUGHES MILL ROAD) OVER JORDAN CREEK	SMITH-ROWE, LLC	Howell, Bobby J	\$620,550.15	6/3/2021	8/31/2022	9/23/2021	7/31/2022	54.00	99.75
DG00511		REPLACE BRIDGE #173 ON SR 1149 (HUFFMAN MILL ROAD) OVER BACK CREEK	R.E. BURNS & SONS CO., INC.	Snell, PE, William H	\$2,106,851.45	5/3/2021	10/25/2022	5/3/2021	10/25/2022	60.00	58.11
DG00520	R-5787F	INSTALLATION OF ADA COMPLIANT CURB RAMPS AT VARIOUS ROUTES	DOT CONSTRUCTION INC	Howell, Bobby J	\$1,271,240.40	5/10/2021	4/14/2023	1/25/2022			
DG00521		REPLACE BRIDGE #164 ON SR 1113 (KIMESVILLE ROAD) OVER NORTH PRONG STINKING QUARTER CREEK	FSC II LLC DBA FRED SMITH COMPANY	Hayes, PE, Meredith D	\$1,418,242.53	6/21/2021	11/18/2021	6/21/2018	2/25/2022	100.00	42.64
DG00523		REPLACE BRIDGE #128 ON SR 2369 (SYLVAN ROAD) OVER CANE CREEK	FSC II LLC DBA FRED SMITH COMPANY	Hayes, PE, Meredith D	\$963,820.60	5/24/2021	8/22/2021	6/10/2021	11/3/2021	100.00	100.00
DG00527	HS-2007C	PLACEMENT OF THERMOPLASTIC PAVEMENT MARKING LINES ON VARIOUS SECONDARY ROADS THROUGHOUT THE DIVISION	TMI SERVICES INC.	Cvijetic, PE, Bojan	\$1,358,289.72	8/16/2021	12/31/2022				

PART is connecting communities!

As part of our *Explore with Express* series, each month, this newsletter will focus on different PART routes and share something exciting and fun about the communities these routes connect! Each of the cities in our 10-county network has interesting and unique features to enjoy, and PART makes connecting easy and affordable. This month's focus will be on our Route 2 Greensboro Express.

Greensboro prides itself on the more than 100 miles of trail and greenway systems it has for the community to enjoy. Using the Greensboro Downtown Greenway, a 4-mile walking and biking trail that loops the city, people can access

many of the city's extensive 100 miles of trail systems right from the downtown area. Within walking distance is the Steven Tanger Center, the International Civil Rights Center & Museum, the historic Carolina Theatre, along with a host of wonderful restaurants, shops, and venues. All easily accessible from PART's downtown depot stop.

PART buses are climate controlled, bike-friendly, handicap accessible, have high back reclining seats and high ceilings. So ... sit back and enjoy the ride as you get out and explore what our neighboring communities have to offer.

Visit [Greensboro-nc.gov/departments/parks-recreation](https://greensboro-nc.gov/departments/parks-recreation) to find your next adventure and utilize PART's Trip Planner at partnc.org/tripplanner to make it an easy to get to adventure.



Carolyn Q. Coleman

Carolyn Q. Coleman, trailblazing civil rights activist and Guilford County NC Commissioner, died Wednesday, January 26th, 2022. Coleman was the first Black woman to chair the board.

"Not once in her remarkable life did she slowdown in her advocacy and commitment to supporting equity, inclusion, and tolerance." (Skip Alston, chair of the Guilford County NC Commissioners)

Commissioner Coleman was also an esteemed member of the PART Board of Trustees since 2005. We are so thankful for her service.



Focusing on Passenger Mobility



Over 4 billion people living in urban areas worldwide need to commute to work and travel every day. That's over 265 billion trips made in a year! (medium)

For the public transportation industry, this requires that we keep moving — to keep things moving! Therefore, PART and the NCDOT-Integrated Mobility Division are currently participating in a Mobility as a Service (MaaS) training program provided by the National Center for Mobility Management (NCMM).

MaaS is an integrated mobility concept in which travelers can access different modes of transportation over a single user interface,

allowing them to plan seamlessly, book, and pay on a pay-as-you-go or subscription basis. The ability for customers to quickly search, book, track, and pay for trips using mobile devices is changing the way people get around and interact with travel.

The first phase of the MaaS training program focuses on developing an implementation guide for the Piedmont Triad transit agencies. Then, using that as a working model will carry out the program statewide. Around the world, companies are introducing new ways to provide mobility services to their communities. And while MaaS implementations are a challenge, we find this direction to be a necessary component for public transportation to stay relevant, customer-focused, and experience growth in the future, and that is the direction we are moving in!

Ready. Set. GET UMO!

It's time to download the new Umo Mobility App ... the TouchPass system will soon become inactive. There are many new features with the UMO app, and we don't want you to miss out! The Umo Mobility App will keep PART riders moving efficiently by offering multi-modal journey planning, contactless payments, and real-time travel information. To get the new app visit the Apple Store or Google Play Store.

Umo is a simple and easy way for our customers to ride. There are two options, download the app on a smartphone, load funds directly through the app to your account, and scan your QR code to pay when boarding. Or purchase a Umo Smartcard, load funds to the card, and scan your card when boarding. For a limited time, you can exchange your TouchPass card for a free Umo card, but act fast; this offer will not last long! Using the Umo app, you can also load passes and Umo cash for Greensboro Transit Agency (GTA) and High Point Transit System (HPTS).

Visit partnc.org/umo, contact our PART Call Center at 336-883-7278, or email umo@partnc.org for more information. When you register your Umo account fully, we will load a free ride!

An advertisement for the Umo Mobility App and Umo Smartcard. The background is a teal-to-blue gradient. At the top, the Umo logo (a stylized face) is next to the text "umo makes riding PART easier". Below this, a smartphone displays the Umo app interface, showing a search bar, a "My Ride" section with a "Get a QR code to use today" button, and a "My Umo" section with a balance of \$10.00. To the right of the phone, a Umo Smartcard is shown with the PART logo. Text on the right says "Are you ready to save more when you ride?". At the bottom, a quote from PART says: "PART doesn't give change, change cards or transfers when paying cash on the bus, you'll also pay each time you ride. Pay exact fare, get FREE transfers, and get PART Rewards by using the Umo Smartcard or the Umo Mobile App."

The TouchPass system will soon be gone, so get moving and make the switch TODAY!