

**BURLINGTON – GRAHAM METROPOLITAN PLANNING ORGANIZATION  
TRANSPORTATION ADVISORY COMMITTEE**

**TUESDAY, OCTOBER 20, 2020 5PM**

The meeting will be held remotely via conference call: (727) 731-6256  
Online meeting ID 251-785-147

Any member of the general public who wishes to make public comment should send an email to [wmallette@burlingtonnc.gov](mailto:wmallette@burlingtonnc.gov) by Monday, October 19, 2020 and the comment will be read during the public comment portion of the meeting

**DRAFT AGENDA**

- 1) **Call to Order & Quorum** **Chairman**
- Welcome and Introductions
    - Introduction of new Transportation Planner, Blake Cashmore
  - Roll Call Attendance
  - Changes to Agenda / Add On Items
  - Speakers from the Floor – 3 minutes per speaker
  - NC Ethics Statement for TAC members

- 2) **Approval of Minutes from August 18, 2020 TAC Meeting** **Chairman**

**Agenda Items #3 & #4 Tabled from August 18, 2020 meeting**

- 3) **NCDOT Transportation Performance Management Update** **Daryl Vreeland**

**INFORMATION:** Under the FHWA Transportation Performance Management (TPM) requirements, NCDOT is developing a Mid Performance Period report due to FHWA by October 1, 2020. This report will update the Baseline Performance Period report submitted to FHWA in 2018. The BGMPO NCDOT-Transportation Planning Division (TPD) Liaison will review the current state targets for the federal measures and performance data and discuss responsibilities for incorporating TPM data and targets in MPO transportation plans.

**RECOMMENDATION/ACTION:** 1) Receive information and discuss

- 4) **2020 BGMPO Transportation Performance Measures and Targets** **Wannetta Mallette**

**INFORMATION:** The MPO is required to set and show demonstrable progress towards meeting the transportation performance targets and reflect those targets in their planning documents and planning agreements with transit agencies, DOTs and other planning partners. MPO's have until February 27, 2021 to agree to adopt NCDOT's safety targets or commit to developing its own quantifiable performance measures. The five safety-related performance measures that were recently submitted as part of NCDOT's yearly Highway Safety Improvement Program annual report are: 1) Number of fatalities, 2) Fatality Rate (per 100 million VMT), 3) Number of Serious Injuries, 4) Serious Injury Rate (per 100 million VMT), and 5) Number of Non-motorized (Pedestrians + Bicyclists) Fatalities and Serious Injuries.

**ACTION/RECOMMENDATION:** 1) Receive information and discuss; 2) TAC endorsement of NCDOT's safety targets (for each of the five measures) for FY21 by resolution.

5) **BGMPO Highway Safety Plan** **Blake Cashmore**

**INFORMATION:** The BGMPO is developing a highway safety program with the objectives of raising awareness and changing public attitudes and behaviors in an effort to reduce accident rates within our region. A Vision Zero goal will be a strategic objective of the planning effort to ensure safety on the regional transportation network. To be most successful in the reduction of traffic collisions and loss of life, continued community education about crash statistics and a program for safer life-saving driving practices is needed. Successful community engagement with key community stakeholders will be essential to the creation and execution of this task.

**ACTION/RECOMMENDATION:** 1) Receive information and discuss; 2) TAC approval to establish Highway Safety Program.

6) **2020 - 2029 STIP Reprogramming** **Wannetta Mallette**

**INFORMATION:** NCDOT recently reprogrammed projects in the State Transportation Improvement Program (STIP) to ensure that the STIP remains fiscally constrained in light of the COVID-19 pandemic resulting impact on revenues, the passage of House Bill 77 regarding NCDOT's fiscal governance, and escalating construction project costs over the past year. The proposed STIP now extends to 2032 from 2029. A list of BGMPO projects affected by the STIP reprogramming was included in the agenda packets. As the adopted 2020-2032 Metropolitan Transportation Improvement Program (TIP) is a subset of the STIP, the TIP and MTP are in need of amendment to align with state and federally funded transportation projects within the BGMPO urban area.

**ACTION/RECOMMENDATION:** 1) Receive information and discuss; 2) TAC release the 2020-2032 TIP for a 10-day public comment period.

7) **SPOT 6.0 Proposed Division Needs Alternative Criteria and Weights** **Wannetta Mallette**

**INFORMATION:** NCDOT'S highest priority is to provide greater assistance to smaller MPOs in the planning and prioritization of projects that reflect the unique needs of each Division. According to the Strategic Transportation Investments (STI) law, alternate scoring criteria can be used for highway projects if there is concurrence among Divisions and their respective MPOs and RPOs. Divisions 7 and its respective MPOs and RPOs are currently discussing whether to move all points from the Freight category to the Safety category as done in SPOT 5.0. Area specific weights are due to the SPOT office by October 23, 2020.

**ACTION/RECOMMENDATION:** 1) Receive information and discuss; 2) TAC endorsement of SPOT 6.0 Option #1 Alternative Criteria and Weights for highway projects by resolution.

8) **NCDOT Board of Transportation Update** **Mike Fox, BOT**

9) **Federal Highway Administration Update** **Suzette Morales**

10) **NCDOT Transportation Planning Division Update/Presentation** **Daryl Vreeland**

The NC Moves 2050 Plan draft recommendations/report was released on October 9, 2020 for a 30-day comment period (October 9 - November 9, 2020). The public comment survey and draft report are posted on the web at [www.ncmoves.gov](http://www.ncmoves.gov). The NC Moves 2050 team also developed a recorded presentation to share at MPO meetings. The presentation can be found on NCDOT YouTube page at <https://youtu.be/iYodsTGQm0>.

11) **NCDOT Division Engineer Report**

**Division 7 Representative**

12) **Other Business**

**Wannetta Mallette**

- Reports and Questions from TAC Members
  - P7.0 Subcommittee Report
  - BGMPO Call for FY 21 UPWP Projects
- **Next Meeting Scheduled January 19, 2021**

***ACCESS TO INFORMATION:***

***ALL MPO DOCUMENTS AND DATA CAN BE PROVIDED IN ALTERNATIVE FORMAT UPON REQUEST***  
***PLEASE CONTACT THE MPO OFFICE FOR ADDITIONAL ASSISTANCE AND INFORMATION***

***336-513-5418***

***ACCESO A INFORMACION***

***TODOS LOS DOCUMENTOS Y DATOS DE MPO SE PUEDEN PROPORCIONAR EN FORMATOS ALTERNOS A PETICION***  
***POR FAVOR COMUNIQUESE CON LA OFICINA DE MPO PARA INFORMACION E ASISTENCIA ADICIONAL***

***336-513-5418***

*It is the policy of the Burlington Graham Metropolitan Planning Organization to ensure that no person shall, on the ground of race, color, sex, age, national origin, or disability, be excluded from participation in, be denied the benefits of, or be otherwise subjected to discrimination under any program or activity as provided by Title VI of the Civil Rights Act of 1964, the Civil Rights Restoration Act of 1987, and any other related non-discrimination Civil Rights laws and authorities.*

**MINUTES**

**BURLINGTON-GRAHAM URBAN AREA  
TRANSPORTATION ADVISORY COMMITTEE  
TUESDAY, AUGUST 18, 2020  
VIA WEBEX  
5PM**

MEMBERS PRESENT

Leonard Williams, Gibsonville (Chair)  
Bob Ward, Burlington (Vice Chair)  
Jamezetta Bedford, Orange County  
Monti Allison, Elon  
Mike Fox, NCDOT BOT  
Ken Jacobs, Whitsett  
Jim Butler, Burlington  
Lee Lovette, Haw River  
Carissa Graves-Henry, Green Level  
Alan Branson, Guilford County  
Melody Wiggins, Graham

BGMPO STAFF PRESENT

Wannetta Mallette

NCDOT STAFF PRESENT

Mike Mills, NCDOT Division 7  
Stephen Robinson, NCDOT Division 7

FHWA PRESENT

Suzette Morales

OTHERS PRESENT

Mike Nunn, Burlington  
Nathan Page, TCC Vice Chair/Graham

Call to Order

Chair Leonard Williams called the August 18, 2020 TAC meeting to order at 5:04 p.m. and welcomed all members and guests. Ms. Wannetta Mallette conducted the membership roll call to determine a quorum. A quorum (simple majority) was present via WebEx or conference call connection. Ms. Mallette read aloud the NC Ethics Statement for TAC members. No known conflicts of interest were identified. Chair Williams then recognized those wanting to make public comments. No comments were made and none were received in advance of the meeting.

Chair Williams requested moving Item #3 Resolution Honoring Mike Mills, PE to later on the agenda. Mr. Alan Branson made the motion to approve the revised draft agenda that was seconded by Mr. Jim Butler. Chair Williams then called for the voice vote and the motion carried unanimously.

**Approval of Minutes from August 18, 2020 TAC Meeting**

Chair Williams requested a motion to approve the draft August 18, 2020 TAC meeting minutes. Ms. Jamezetta Bedford made the motion to approve the meeting minutes and Ms. Melody Wiggins seconded the motion. Chair Williams then called for the voice vote:

Bob Ward - Aye	Jim Butler - Aye
Jamezetta Bedford - Aye	Monti Allison - Aye
Melody Wiggins - Aye	Ken Jacobs - Aye
Mike Fox - Aye	Lee Lovette - Aye
Carissa Graves Henry - Aye	Leonard Williams - Aye
Alan Branson - Aye	

The motion carried by unanimous vote.

**BGMPO P7.0 Subcommittee**

Ms. Mallette presented an overview of the Prioritization 7.0 draft Subcommittee organizational structure and guidelines included in the agenda packets. The TCC approved the draft subcommittee structure and guidelines and recommended the following to serve as members:

- Four members of the BGMPO TCC (representing local governments)
  - Nathan Page, Graham
  - Cy Stober, Mebane
  - Mike Nunn, Burlington
  - Nishith Trivedi, Orange County
- Two members of the BGMPO TCC (representing transit agencies or aviation authority)
  - Link Transit, ACTA
- One BGMPO Staffer
  - Wannetta Mallette, BGMPO
- One NCDOT Staffer (non-voting)
  - Tamara Njegovan - NCDOT

There being no questions, Chair Williams requested a motion to approve the P7.0 draft Subcommittee structure, guidelines and membership recommendations. Mr. Branson made the motion to approve and Mr. Butler seconded the motion. Chair Williams then called for the voice vote:

Bob Ward - Aye	Jim Butler - Aye
Jamezetta Bedford - Aye	Monti Allison - Aye
Melody Wiggins - Aye	Ken Jacobs - Aye
Mike Fox - Aye	Lee Lovette - Aye
Carissa Graves Henry - Aye	Leonard Williams - Aye
Alan Branson - Aye	

The motion carried by unanimous vote.

**Renewal of Air Quality Conformity Memorandum of Agreement**

Ms. Mallette stated the N.C. Department of Environmental Quality (DEQ) Division of Air Quality requested BGMPO adoption of the Memorandum of Agreement (MOA) between the BGMPO, NCDOT, North Carolina DEQ, US Environmental Protection Agency (EPA), Federal Highway Administration (FHWA), and Federal Transit Administration (FTA). The transportation conformity MOA is intended to ensure that interagency consultation procedures for transportation conformity are followed. The MOA revision include: updating names, rewording of phrases, adding language to allow administrative amendments, updating inputs needed to generate emissions modeling results and adding a duty for 10 MPOs to conduct project-level conformity analyses as a part of the NEPA process for MPO-sponsored federal projects. Ms. Mallette explained that project-level conformity is required for all areas that are nonattainment/maintenance. Staff and the TCC recommended TAC approval of the MOA by resolution.

Chair Williams requested a motion to approve the MOA. Mr. Mike Fox made the motion, seconded by Mrs. Carissa Graves-Henry. Chair Williams then called for the voice vote:

Bob Ward - Aye	Jim Butler - Aye
Jamezetta Bedford - Aye	Monti Allison - Aye
Melody Wiggins - Aye	Ken Jacobs - Aye
Mike Fox - Aye	Lee Lovette - Aye
Carissa Graves Henry - Aye	Leonard Williams - Aye
Alan Branson - Aye	

The motion carried unanimously.

**NCDOT Transportation Performance Management Update and  
2020 BGMPO Transportation Performance Measures and Targets**

Ms. Mallette requested the postponement of Items #6 and #7 to the October 20, 2020 meeting. Chair Williams requested a motion to postpone the agenda items. Mr. Bob Ward made the motion seconded by Mr. Fox. Chair Williams then called for the voice vote:

Bob Ward - Aye	Jim Butler - Aye
Jamezetta Bedford - Aye	Monti Allison - Aye
Melody Wiggins - Aye	Ken Jacobs - Aye
Mike Fox - Aye	Lee Lovette - Aye
Carissa Graves Henry - Aye	Leonard Williams - Aye
Alan Branson - Aye	

The motion passed.

**Mr. Mike Mills, PE Resolution**

Chair Williams read aloud a resolution to Mr. Mike Mills, PE in acknowledgement of his many years of dedicated public service to NCDOT, Division 7 and to the BGMPO region. Thereafter, TAC members congratulated Mr. Mills on his retirement, expressed their appreciation and reflected on their personal interactions with Mr. Mills. Mr. Fox, commented that Mr. Mills was an invaluable asset to NCDOT and his presence will be sorely missed. There being no further comments, Chair Williams asked for unanimous consent to adopt the resolution. The motion to adopt passed unanimously voice vote.

**Division 7 Engineer Report**

Mr. Stephen Robinson reported only one change since the June 2020 report, I-5711 interchange improvements at I-40/85 @ Mebane Oaks Road. The project let date was moved to March 2021 from March 2020.

**NCDOT BOT Update**

Mr. Fox reported that NCDOT will be modifying the 2020 - 2029 STIP due to post Covid-19 revenue impacts. The STIP amendments will be presented to the TAC at the next meeting. Ms. Bedford asked if there would be flexibility in the expenditure of CARES funding for construction projects. Mr. Fox replied that the NC congressional delegation is supportive and final decisions are tied to the next round of CARES ACT legislation. North Carolina has set aside \$300 million to replace lost revenue.

**FHWA**

No update.

## Adjournment

Mr. Branson notified the TAC of his scheduling conflicts and that he remains interested in representing Guilford County. TAC members expressed their desire to return to normalcy in the near future and holding in-person meetings.

There being no further comments, Chair Williams requested a motion to adjourn. Mr. Branson made the motion seconded by Ms. Graves-Henry. The motion to adjourn carried by unanimous voice vote and the meeting adjourned at 5:47 p.m. The next TAC meeting is scheduled on **October 20, 2020**.





### Endorsement of Targets for Safety Performance Measures Established By NCDOT

A motion was made by TAC Member \_\_\_\_\_ and seconded by TAC Member \_\_\_\_\_ for the adoption of the following resolution and upon being put to a vote was duly adopted.

**WHEREAS,** the Burlington – Graham Metropolitan Planning Organization (BGMPO) has been designated by the Governor of the State of North Carolina as the Metropolitan Planning Organization (MPO) responsible, together with the State, for the comprehensive, continuing, and cooperative transportation planning process for the MPO’s metropolitan planning area; and,

**WHEREAS,** the Highway Safety Improvement Program (HSIP) final rule (23 CFR Part 490) requires States to set targets for five safety performance measures annually; and,

**WHEREAS,** the North Carolina Department of Transportation (NCDOT) has established targets for five performance measures based on five year rolling averages for: (1) Number of Fatalities, (2) Rate of Fatalities per 100 million Vehicle Miles Traveled (VMT), (3) Number of Serious Injuries, (4) Rate of Serious Injuries per 100 million VMT, and (5) Number of Non-Motorized (bicycle and pedestrian) Fatalities and Non-motorized Serious Injuries; and,

**WHEREAS,** the NCDOT coordinated the establishment of safety targets with the 19 Metropolitan Planning Organizations (MPOs) in North Carolina continually through outreach conducted by NCDOT’s Mobility and Safety Group; and,

**WHEREAS,** the NCDOT officially establishes and reports the safety targets in the Highway Safety Improvement Program annual report by August 31, of each year; and,

**WHEREAS,** the MPO’s may establish safety targets by agreeing to plan and program projects that contribute toward the accomplishment of the State’s targets for each measure or establish its own target within 180 days of the State establishing and reporting its safety targets in the HSIP annual report.

**NOW THEREFORE, BE IT RESOLVED,** that the BGMPO agrees to plan and program projects that contribute toward the accomplishment of the State’s targets as *noted below for each of the aforementioned performance measures:*

North Carolina Calendar Year 2021 Safety Performance Targets	
<i>Performance Measures</i>	<i>CY 2021</i>
Number of Fatalities	1,309.9
Rate of Fatalities	1.105
Number of Serious Injuries	3,656.1
Rate of Serious Injuries	3.065
Number of Non-Motorized Fatalities & Serious Injuries	504.4

Now therefore, be it further resolved, that by approval of this resolution, an amendment is hereby made to the 2045 MTP adopted on June 16, 2020 by the Burlington – Graham MPO.

Date: \_\_\_\_\_

By: \_\_\_\_\_

TAC Chair

STATE of: North Carolina  
COUNTY of: Alamance

I \_\_\_\_\_, Notary Public of \_\_\_\_\_ County, North Carolina do hereby certify that \_\_\_\_\_ personally appeared before me on the \_\_\_\_\_ day of \_\_\_\_\_ to affix his signature to the foregoing document.

\_\_\_\_\_  
Notary Public

My Commission Expires: \_\_\_\_\_

## 2020-2032 DRAFT BGMP Transportation Improvement Program (TIP)

STIP REPROGRAMMING – AUGUST 2020

\*Changes \*\* Additions

ID Number	Facility	City/County	Location	Project Description	Prior Schedule		Revised Schedule		Cost/Funding
					PE/ROW	Construction	PE/ROW	Construction	
<b>INTERSTATE</b>									
I-5954	I-40/85	Alamance/Orange	East of N 54 In Graham to West of Buckhorn Road	Pavement Rehabilitation	Under Construction		Under Construction		\$ 11,179,000
I-5836	I-40/85	Graham	NC 49 to NC 54	Pavement Rehabilitation	Under Construction		Under Construction		\$ 100,000
I-5956	I-40/85	Alamance/Guilford	East of Rock Creek Dairy Road to West of University Drive	Pavement Rehabilitation	Under Construction		Under Construction		\$ 4,702,000
I-6009	I-40/85	Burlington	Huffman Mill Road	Construct left turn lane and improve Garden Road Operations	FY 2025	FY 2026	FY 2028	FY 2029	\$ 1,533,000
I-5711	I-40/85	Mebane	Mebane Oaks Road	Interchange Improvements		FY 2019/21		FY 2021/23	\$ 16,176,000
I-5309	I-40/85	Alamance	Guilford County Line to East of NC 49	Pavement Rehabilitation	Under Construction		Under Construction		\$ 14,411,000
I-6059	I-40/85	Mebane	Trollingwood-Hawfields Road	Interchange Improvements	FY 2027	FY 2028	FY 2028	FY 2030/31	\$ 12,400,000
I-5958	I-40/85	Mebane	Buckhorn Road to Orange Grove Road	Pavement Rehabilitation		FY 2023		FY 2027/28	\$ 8,840,000
<b>HIGHWAY</b>									
R-5787	Various	Division 7	Division wide	ADA Intersection Upgrades	Under Construction		In Progress		\$ 3,089,000
U-6011	US 70	Burlington	Huffman Mill Road	Intersection Improvements	FY 2020	FY 2021	FY 2023	FY 2025	\$ 1,750,000
U-5752	US 70	Burlington	St. Marks Church Road	Intersection Improvements	Under Construction		Under Construction		\$ 4,278,000
U-6009	US 70	Burlington	Tarleton Avenue to Fifth Street	Widen and Construct Center Turn Lane	FY 2020	FY 2021	FY 2027	FY 2030	\$ 11,719,000
U-6183	NC 49	Haw River	Wilkins Road and Bason Road	Intersection Improvements	FY 2027	FY 2028	FY 2027	FY 2030	\$ 2,700,000
U-6115	NC 54	Graham	Riverbend Road to Whittemore Road	Intersection Improvements and Upgrade Culvert	FY 2025	FY 2026	FY 2028	FY 2030	\$ 6,700,000
U-6184	NC 54	Burlington	South O'Neal Street	Intersection Improvements	FY 2027	FY 2028	FY 2027	FY 2030	\$ 1,900,000
U-6010	US 70	Burlington	University Drive	Intersection Improvements and Widening of US 70	FY 2020	FY 2021	FY 2020	FY 2021	\$ 1,750,000
U-5844	NC 62	Burlington	Ramada Road to Church Street	Widen to Multilanes	FY 2020	FY 2021/22	FY 2023	FY 2024/25	\$ 11,400,000
U-6182	NC 87	Burlington	Flora Avenue	New Traffic Signal/Turn Lanes	FY 2027	FY 2028	FY 2027	FY 2030	\$ 1,300,000
U-3109	NC 119	Mebane	I-85 to S. Mrs. White Road	Widen to Multilanes, New Location	In Progress		Under Construction		\$ 155,840,000
U-6013	NC 119	Mebane	Trollingwood-Hawfields Road to Lowes Boulevard	Widen to Multilanes	FY 2021	FY 2023	FY 2022	FY 2024/25	\$ 9,100,000
U-6214	E. Haggard	Elon	W. Webb at University Drive	Improve Intersection	FY 2027	FY 2029	FY 2027	FY 2030/31	\$ 13,100,000
U-5538	New Route	Mebane	Trollingwood-Hawfields Road to Industrial Site	Construct Two-Lane Road	In Progress		Under Construction		\$ 3,740,000
U-3110	New Route	Elon	US 70 to NC 100	Construct Multilane Facility	Under Construction		Complete		\$ 30,477,000
U-6114	NC 62	Burlington	Hatchery Road at Bonnie Lane	New Traffic Signal/Turn Lanes	FY 2025	FY 2027	FY 2025	FY 2027	\$ 1,310,000
U-6014	Graham-Hopedale Road	Burlington	W. Hanover Road to Morningside Drive	Widen to Multilanes with Bike/Ped Lanes	FY 2021	FY 2023/25	FY 2022	FY 2024/26	\$ 15,600,000
U-6132	N. Main Street	Graham	W. Parker Street	Intersection Improvements	FY 2025	FY 2026	FY 2028	FY 2030	\$ 3,000,000
U-6131	NC 54	Burlington	Maple Avenue	Intersection Improvements	FY 2025	FY 2026	FY 2025	FY 2026	\$ 1,600,000
U-6017	NC 54	Graham	East Elm Street	Intersection Improvements	FY 2020	FY 2021	FY 2021	FY 2022	\$ 1,566,000
U-5843	US 70	Burlington	Graham-Hopedale Road	Intersection Improvements	In Progress	FY 2019	Under Construction		\$ 3,998,000
<b>SIGNAL SYSTEM</b>									
U-6015	Burlington	Burlington/Graham	Upgrade	Upgrade Signal System	Under Construction		Under Construction		\$ 15,075,000
<b>BRIDGE REPLACEMENT</b>									
B-4960	Judge Adams Road	Guilford	Little Alamance Creek	Bridge Replacement	Under Construction		Under Construction		\$ 3,514,000
B-6052	Trollingwood Road	Alamance	NCRR/Norfolk Southern Railroad	Bridge Replacement	FY 2024	FY 2026	FY 2024	FY 2026	\$ 3,000,000
B-5347	Pond Road	Alamance	Alamance Creek	Bridge Replacement	Under Construction		Under Construction		\$ 1,560,000
<b>SAFETY</b>									
HS-2007	Various	Division 7	Division wide	Safety improvements at various locations in Division 7	To Be Requested		To Be Requested		
W-5207	Various	Division 7	Division wide	Safety improvements at various locations in Division 7	In Progress		Under Construction		\$ 5,636,000
W-5707	Various	Division 7	Division wide	Safety improvements at various locations in Division 7	In Progress		In Progress		\$ 1,350,000
W-5807	Various	Division 7	Division wide	Safety improvements at various locations in Division 7	FY 2022	FY 2023	FY 2022	FY 2023	\$ 506,000
<b>CONGESTION MANAGEMENT</b>									
C-5602	Various	CMAQ		Air Quality and Congestion Improvements	FY 2019	FY 2020	FY 2019	FY 2020	
<b>MITIGATION PROJECTS</b>									
EE-4907	Various	Division 7	Division wide	Project Mitigation	In Progress		In Progress		\$ 18,169,000
<b>AVIATION</b>									
AV-5851	Burlington/Alamance Airport	Burlington	Runway	Construct Paved Overrun/Safety Improvements		FY 2020		FY 2022	\$ 2,080,000
AV-5737	Burlington/Alamance Airport	Burlington	Runway 24 Approach Improvements	Easements and Construction Clearance	FY 2019		FY 2021		\$ 1,363,000
<b>BICYCLE AND PEDESTRIAN</b>									
EB-5879	US 70	Burlington	Graham-Hopedale Road to Sellars Mill Road	Construct Sidewalk	FY 2019	FY 2019	FY 2019	FY 2020	\$ 110,000
EB-5885	US 70	Burlington	Beaumont Avenue to Graham-Hopedale Road	Construct Sidewalk		FY 2020		FY 2020	\$ 120,000
EB-5882	Graham-Hopedale Road	Burlington	W. Hanover Road to N. Mebane Street	Construct Sidewalk	FY 2020	FY 2021	FY 2020	FY 2021	\$ 137,000
EB-5887	NC 49/ NC 54	Graham	W. Pine Street to N. Marshall Street	Construct Sidewalk	FY 2019/21	FY 2022	FY 2021	FY 2022	\$ 175,000
EB-5884	NC 87	Graham	Ivey Road to East Gilbreath Street	Construct Sidewalk	FY 2020	FY 2021	FY 2020	FY 2021	\$ 539,000
EB-5988	Lee Avenue	Elon	W. Lebanon Avenue to W. Haggard Avenue	Construct Sidewalk	FY 2025	FY 2026	FY 2024/25	FY 2026	\$ 246,000

BGMPO 2020-2032 TIP

TRANSIT							
TG-6187	Statewide			Formula Funding			\$ 3,751,000
TG-6811B	ACTA	Alamance		Funding for Preventive Maintenance			\$ 46,000
TA-6733	LinkTransit	Alamance		Capital Assistance			\$ 1,235,000
TD-6322	LinkTransit	Alamance		Capital Assistance			\$ 60,000
TG-6812A	LinkTransit	Alamance		ADA Services			\$ 211,000
TO-6170	LinkTransit	Alamance		Operating Assistance			\$ 3,394,000
TP-5162	LinkTransit	Alamance		Planning for Facility Feasibility Study			\$ 95,000
TP-5161	LinkTransit	Alamance		Planning for Fixed Route Service Expansion			\$ 5,000
TO-5220	BGMPO	Orange		Operating Assistance			\$ 282,000
TO-6151	LinkTransit	Guilford		Operating Assistance			\$ 4,032,000
TO-6142	Statewide	Statewide		Formula Funding			\$ 18,778,000
TO-5214	ACTA	Alamance		Operating Assistance			\$ 10,060,000
TG-6137B	PART	Alamance		Capital			\$ 1,000,000
TO-5136	PART	Alamance/Guilford		Operating Assistance			\$ 11,817,000
TO-5134	PART	Alamance		Operating Assistance			\$ 5,800,000
PASSENGER RAIL							
P-4405	Various	Division 7		Private Crossings Safety	In Progress	In Progress	\$ 10,291,000
RC-2007	Various	Division 7		Traffic Separation Study		To Be Requested	--
RX-2007	Various	Division 7		Highway-Rail Grade Crossing Safety Improvements		To Be Requested	--
Y-5807	Various	Division 7		Traffic Separation Study		To Be Requested	--
Z-5807	Various	Division 7		Highway-Rail Grade Crossing Safety Improvements		To Be Requested	--
P-5719	NCCR	Division 7		Purchase and Refurbish Rail Cars	In Progress	In Progress	\$ 45,277,000
P-5205	Piedmont Corridor	Alamance	Graham to Haw River	Siding and Curve Realignment	Under Construction	Under Construction	\$ 11,605,000
P-2918	Piedmont Corridor	Division 7	Train 74/75	Equipment and Capital Yard Maintenance	In Progress	In Progress	\$ 174,422,000
2020							
WBS	Plan Year	Route Name	County	From Description	To Description	To Description	Length
N/A	2020	US 70	001-Alamance	SR 1928	SR 1301	SR 1301	8.40
N/A	2020	Friendship-Patterson Mill Rd.	001-Alamance	NC 62	SR 2321	SR 2321	4.88
N/A	2020	Hatchery Rd.	001-Alamance	SR 1154	NC 62	NC 62	0.98
N/A	2020	O'Neal-Rockwood Conn.	001-Alamance	US 70	SR 1323	SR 1323	1.30
N/A	2020	Pond Rd.	001-Alamance	SR 1149	END MAINT	END MAINT	1.70
N/A	2020	Whitsell Dr.	001-Alamance	SR 1158	END MAINT	END MAINT	0.13
N/A	2020	Inge Rd.	001-Alamance	SR 1216	SR 1166	SR 1166	0.14
N/A	2020	Altamahaw Church St.	001-Alamance	SR 1571	CUL-DE-SAC	CUL-DE-SAC	1.31
N/A	2020	Alfred Rd.	001-Alamance	SR 2159	SR 2158	SR 2158	0.96
N/A	2020	Cedar Cliff Rd.	001-Alamance	SR 2116	NC 87	NC 87	1.67
N/A	2020	Harden St. (NC 54)	001-Alamance	US 70 (W)	NC 49	NC 49	2.17
2021							
WBS	Plan Year	Route Name	County	From Description	To Description	To Description	Length
N/A	2021.00	NC 62	001-Alamance	GCL	I-40	I-40	7.05
N/A	2021.00	Mt. Willen Rd.	001-Alamance	SR 2135	SR 2147	SR 2147	4.60
N/A	2021.00	Anthony Rd.	001-Alamance	NC 62	SR 1148	SR 1148	0.29
N/A	2021.00	Anthony Rd.	001-Alamance	NC 49	SR 1147	SR 1147	3.05
N/A	2021.00	Graham Hopedale Rd.	001-Alamance	PVMT JOINT	NC 54	NC 54	2.84
N/A	2021.00	Parker St.	001-Alamance	NC 49	SR 1716	SR 1716	1.00
N/A	2021.00	Lindley Mill Rd.	001-Alamance	CCL	SR 1005	SR 1005	4.31
N/A	2021.00	Timber Ridge Lake Rd.	001-Alamance	NC 49	GCL	GCL	2.50
N/A	2021.00	Flora Ave.	001-Alamance	NC 87	SR 1530	SR 1530	1.07
N/A	2021.00	Danieley Water Wheel Rd.	001-Alamance	SR 1594	SR 1593	SR 1593	1.27
N/A	2021.00	Hanover Rd.	001-Alamance	SR 1801	SR 1716	SR 1716	1.78
N/A	2021.00	Stone St.	001-Alamance	NC 49	SR 1936	SR 1936	0.48
N/A	2021.00	Stone St. Extension	001-Alamance	SR 1935	SR 1940	SR 1940	2.26
N/A	2021.00	Center St.	001-Alamance	NC 119	OCL	OCL	0.37
N/A	2021.00	Holt St.	001-Alamance	US 70	SR 1962	SR 1962	1.63
N/A	2021.00	Eighth St.	001-Alamance	Sr 1961	SR 1007	SR 1007	0.60
N/A	2021.00	Bakatsias Lane	001-Alamance	SR 1928	END MAINT	END MAINT	0.52
N/A	2021.00	Porter Ave.	001-Alamance	SR 2185	END MAINT.	END MAINT.	0.08
N/A	2021.00	Silk Hope Liberty Rd.	001-Alamance	RCL	CCL	CCL	0.30
N/A	2021.00	Old Switchboard Rd.	001-Alamance	SR 1003	CCL	CCL	2.33
N/A	2021.00	Holman Mill Rd.	001-Alamance	SR 1004	SR 1005	SR 1005	0.77
N/A	2021.00	Longpine Rd.	001-Alamance	SR 1146	END MAINT.	END MAINT.	0.40

N/A	2021.00	South Mebane St.	001-Alamance	End of Divided	NC 87	NC 87	1.36
N/A	2021.00	Haggard Ave.	001-Alamance	SR 1301	NC 100	NC 100	0.73
N/A	2021.00	Haggard Ave.	001-Alamance	NC 87	SR 1323	SR 1323	1.30

BURLINGTON-GRAHAM URBAN AREA METROPOLITAN PLANNING ORGANIZATION

TYPE OF WORK / ESTIMATED COST IN THOUSANDS / PROJECT BREAKS

COMMITTED / NON	ROUTE/CITY COUNTY	ID NUMBER	LOCATION / DESCRIPTION	LENGTH	TOTAL PROJ COST (THOU)	PRIOR YEARS COST (THOU)	FUNDS	FY 2020	FY 2021	FY 2022	STATE TRANSPORTATION IMPROVEMENT PROGRAM					DEVELOPMENTAL PROGRAM					UNFUNDED	
											FY 2023	FY 2024	FY 2025	FY 2026	FY 2027	FY 2028	FY 2029	FY 2030	FY 2031	FY 2032	FUTURE YEARS	
<b>INTERSTATE PROJECTS</b>																						
<input checked="" type="checkbox"/>	I-40 / I-85	I-5954	EAST OF NC 54 IN GRAHAM IN ALAMANCE COUNTY TO WEST OF SR 1114 (BUCKHORN ROAD) IN ORANGE COUNTY. PAVEMENT REHABILITATION.	8.4	11179	11179																
SW	ALAMANCE ORANGE																					
UNDER CONSTRUCTION																						
<input checked="" type="checkbox"/>	I-40 / I-85	I-6009 H172025	SR 1158 (HUFFMAN MILL ROAD) INTERCHANGE. CONSTRUCT ADDITIONAL LEFT TURN LANE ON I-40 WESTBOUND RAMP AND IMPROVE OPERATIONS AT SR 1308 (GARDEN ROAD) INTERSECTION.	0.5	1597	10																
SW	ALAMANCE																					
UNDER CONSTRUCTION																						
<input checked="" type="checkbox"/>	I-40 / I-85	I-5956	EAST OF SR 3056 (ROCK CREEK DAIRY ROAD) IN GUILFORD COUNTY TO WEST OF SR 1226 (UNIVERSITY DRIVE) IN ALAMANCE COUNTY. PAVEMENT REHABILITATION.	5.2	4702	4702																
SW	ALAMANCE GUILFORD																					
UNDER CONSTRUCTION																						
<input checked="" type="checkbox"/>	I-40 / I-85	I-5836	0.2 MILE EAST OF NC 49 TO 0.2 MILE EAST OF NC 54 IN GRAHAM. PAVEMENT REHABILITATION.	2.7	100	100																
SW	ALAMANCE																					
UNDER CONSTRUCTION - CONSTRUCTION FUNDED UNDER I-5309																						
<input checked="" type="checkbox"/>	I-40 / I-85	I-5309	EAST OF GUILFORD COUNTY LINE TO EAST OF NC 49. PAVEMENT REHABILITATION.	5.8	14411	14411																
SW	ALAMANCE																					
UNDER CONSTRUCTION - PROJECT COST INCLUDES I-5836 CONSTRUCTION																						
<input checked="" type="checkbox"/>	I-40 / I-85	I-5711 H140348	SR 1007 (MEBANE-OAKS ROAD) IN MEBANE. INTERCHANGE IMPROVEMENTS.		19919	5476																
SW	ALAMANCE																					
RIGHT-OF-WAY IN PROGRESS; GARVEE BOND FUNDING: \$2.17 MILLION FOR CONSTRUCTION - PAYBACK 2021-2035																						
<input checked="" type="checkbox"/>	I-40 / I-85	I-5958	WEST OF SR 1114 (BUCKHORN ROAD) TO WEST OF SR 1006 (ORANGE GROVE ROAD). PAVEMENT REHABILITATION.	7.1	8840	150																
SW	ORANGE																					
<b>RURAL PROJECTS</b>																						
<input checked="" type="checkbox"/>	VARIOUS	R-5787	DIVISION 7 PROGRAM TO UPGRADE INTERSECTIONS TO COMPLY WITH THE AMERICANS WITH DISABILITIES ACT (ADA) USING TRANSPORTATION ALTERNATIVES (TA) FUNDS.		6189	5689																
DIV	ALAMANCE CASWELL GUILFORD ORANGE ROCKINGHAM																					
IN PROGRESS; "S" FUNDS REFLECT STATE HIGHWAY FUNDS																						
<b>URBAN PROJECTS</b>																						
<input type="checkbox"/>	I-40 / I-85	I-6059 H172286	SR 1981 (TROLLINGWOOD-HAWFIELDS ROAD) IN MEBANE. UPGRADE INTERCHANGE.		12400																	
DIV	ALAMANCE																					
<input checked="" type="checkbox"/>	US 70 (SOUTH CHURCH STREET)	U-5752 H111054	ST. MARKS CHURCH ROAD IN BURLINGTON. INTERSECTION IMPROVEMENTS.		4278	4278																
REG	ALAMANCE																					
UNDER CONSTRUCTION																						

DIV - Division Category EX - Exempt Category  
 HF - State Dollars (Non STI) REG - Regional Category  
 SW - Statewide Category TRN - Transition Project

COST AND SCHEDULES ARE PRELIMINARY AND SUBJECT TO SIGNIFICANT CHANGE AS MORE INFORMATION BECOMES AVAILABLE

BURLINGTON-GRAHAM URBAN AREA METROPOLITAN PLANNING ORGANIZATION

TYPE OF WORK / ESTIMATED COST IN THOUSANDS / PROJECT BREAKS

COMMITTED / NON	ROUTE/CITY COUNTY	ID NUMBER	LOCATION / DESCRIPTION	LENGTH	TOTAL PROJ COST (THOU)	PRIOR YEARS COST (THOU)	FUNDS	FY 2020	FY 2021	FY 2022	STATE TRANSPORTATION IMPROVEMENT PROGRAM					DEVELOPMENTAL PROGRAM					UNFUNDED FUTURE YEARS	
											FY 2023	FY 2024	FY 2025	FY 2026	FY 2027	FY 2028	FY 2029	FY 2030	FY 2031	FY 2032		
<b>URBAN PROJECTS</b>																						
<input checked="" type="checkbox"/>	US 70 (SOUTH CHURCH STREET)	U-6010 H151068	SR 1226 / SR 1311 (UNIVERSITY DRIVE) IN BURLINGTON. INTERSECTION IMPROVEMENTS, TO INCLUDE WIDENING OF US 70 TO MAINTAIN CONSISTENT CROSS-SECTION WITH PROJECT U-5752 IMPROVEMENTS.	0.6	11850	3450	T			C 8400												
REG	ALAMANCE																					
RIGHT OF WAY IN PROGRESS																						
<input type="checkbox"/>	NC 49 (ROXBORO ROAD)	U-6183 H171633	SR 1928 (WILKINS ROAD) AND SR 1927 (BASON ROAD). UPGRADE K-TYPE INTERSECTION.		2700		T															
DIV	ALAMANCE																					
<input checked="" type="checkbox"/>	NC 54 (EAST HARDEN STREET)	U-6017 H111055	NC 49 (EAST ELM STREET) IN GRAHAM. INTERSECTION IMPROVEMENTS.		1696	480	T			R 180												
DIV	ALAMANCE									U 100												
<input checked="" type="checkbox"/>	NC 54	U-6115	SR 1945 (RIVERBEND ROAD) / SR 2431 (JOHNSON STREET) TO SOUTH OF SR 2107 (WHITTEMORE ROAD) IN GRAHAM. IMPROVE SR 1945 (RIVERBEND ROAD) / SR 2431 (JOHNSON STREET) INTERSECTION, UPGRADE RAMP INTERSECTIONS AT I-40 / I-85, IMPROVE SR 2106 (WOODY ROAD) INTERSE	0.5	13810	10	T															
REG	ALAMANCE																					
							P5.0 COMMITTED	DIV A	H171028	SR 1945 (RIVERBEND ROAD) / SR 2431 (JOHNSON STREET) INTERSECTION IN GRAHAM. INTERSECTION IMPROVEMENTS.												
							P5.0 COMMITTED	REG B	H171125	I-40 / I-85 INTERCHANGE IN GRAHAM. UPGRADE RAMP INTERSECTIONS.												
							P5.0 COMMITTED	REG C	H171030	SR 2106 (WOODY DRIVE) IN GRAHAM. INTERSECTION IMPROVEMENTS.												
							P5.0 COMMITTED	REG D	H171105	SR 2106 (WOODY DRIVE) AND SR 2107 (WHITTEMORE ROAD) INTERSECTIONS IN GRAHAM. UPGRADE PIPE CULVERTS 000271 AND 000297.												
<input type="checkbox"/>	NC 54 (CHAPEL HILL ROAD)	U-6184 H172275	SR 1445 (SOUTH O'NEAL STREET) IN BURLINGTON. RECONFIGURE INTERSECTION TO MAKE O'NEAL STREET THE THROUGH MOVEMENT WITH NC 54 EAST OF THE INTERSECTION.		14600		T															
DIV	ALAMANCE																					
<input checked="" type="checkbox"/>	NC 62 (ALAMANCE ROAD)	U-6114 H171985	SR 1155 (HATCHERY ROAD) / BONNIE LANE INTERSECTION IN BURLINGTON. INSTALL TRAFFIC SIGNAL AND ADD TURN LANES.	0.5	15210	10	T															
REG	ALAMANCE																					
<input checked="" type="checkbox"/>	NC 62	U-5844 H090374	SR 1430 (RAMADA ROAD) TO US 70 (CHURCH STREET) IN BURLINGTON. WIDEN TO MULTILANES.	1.1	11400	500	T															
DIV	ALAMANCE																					
<input checked="" type="checkbox"/>	NC 119	U-3109	NC 119 RELOCATION, I-85 TO SOUTH OF SR 1918 (MRS. WHITE ROAD) IN MEBANE. FOUR-TO-SIX-LANE FACILITY ON NEW LOCATION.	4.2	131561	81187	T				PE 24 A	PE 24 A	PE 24 A	PE 24 A	PE 24 A	PE 24 A	PE 24 A	PE 24 A	PE 24 A	PE 24 A	PE 24 A	PE 76 A
	ALAMANCE										CB 2426 A	CB 2905 A	CB 2905 A	CB 2905 A	CB 2905 A	CB 2905 A	CB 2905 A	CB 2905 A	CB 2905 A	CB 2905 A	CB 2905 A	CB 6289 A
											CB 429 B	CB 429 B	CB 429 B	CB 429 B	CB 429 B	CB 429 B	CB 429 B	CB 429 B	CB 429 B	CB 429 B	CB 429 B	CB 1287 B
							P3.0 COMMITTED	REG A	H090380-	NC 119 RELOCATION, I-40 / I-85 TO NORTH OF SR 1921 (MEBANE ROGERS ROAD). - UNDER CONSTRUCTION; BUILD NC BONDS: \$14.14 MILLION FOR CONSTRUCTION - PAYBACK 2019-2033, \$282,000 FOR PRELIMINARY ENGINEERING AND \$19.72 MILLION FOR CONSTRUCTION - PAYBACK 2021-2035												
							P3.0 COMMITTED	REG B	H090380-	NC 119 RELOCATION, NORTH OF SR 1921 (MEBANE ROGERS ROAD) TO SOUTH OF SR 1918 (MRS. WHITE ROAD) - UNDER CONSTRUCTION; BUILD NC BONDS: \$5 MILLION FOR CONSTRUCTION - PAYBACK 2021-2035												

DIV - Division Category  
 HF - State Dollars (Non STI)  
 SW - Statewide Category  
 EX - Exempt Category  
 REG - Regional Category  
 TRN - Transition Project

COST AND SCHEDULES ARE PRELIMINARY AND SUBJECT TO SIGNIFICANT CHANGE AS MORE INFORMATION BECOMES AVAILABLE



BURLINGTON-GRAHAM URBAN AREA METROPOLITAN PLANNING ORGANIZATION

TYPE OF WORK / ESTIMATED COST IN THOUSANDS / PROJECT BREAKS

COMMITTED / NON	ROUTE/CITY COUNTY	ID NUMBER	LOCATION / DESCRIPTION	LENGTH	TOTAL PROJ COST (THOU)	PRIOR YEARS COST (THOU)	FUNDS	FY 2020	FY 2021	FY 2022	STATE TRANSPORTATION IMPROVEMENT PROGRAM					DEVELOPMENTAL PROGRAM					UNFUNDED FUTURE YEARS	
											FY 2023	FY 2024	FY 2025	FY 2026	FY 2027	FY 2028	FY 2029	FY 2030	FY 2031	FY 2032		
<b>URBAN PROJECTS</b>																						
<input checked="" type="checkbox"/>	US 70 (SOUTH CHURCH STREET)	U-6011 H151070	SR 1158 (HUFFMAN MILL ROAD) IN BURLINGTON. INTERSECTION IMPROVEMENTS.		3150	450	T					R	200									
							T					U	100									
							T								C	2400						
REG	ALAMANCE																					
<hr/>																						
<input checked="" type="checkbox"/>	US 70 (NORTH CHURCH STREET)	U-5843 H111052	SR 1817 (GRAHAM-HOPEDALE ROAD) IN BURLINGTON. INTERSECTION IMPROVEMENTS.	0.5	7160	3561	T		PE 54	PE 54		PE 54	PE 54	PE 54	PE 54	PE 54	PE 54	PE 181	PE 54	PE 54	PE 54	PE 156
							T	CB 112	CB 239	CB 183		CB 183	CB 183	CB 183	CB 183	CB 183	CB 183	CB 56	CB 183	CB 183	CB 183	CB 431
DIV	ALAMANCE																					
UNDER CONSTRUCTION; BUILD NC BONDS: \$654,000 FOR CONSTRUCTION - PAYBACK 2019-2033, \$625,000 FOR PRELIMINARY ENGINEERING AND \$1.475 MILLION FOR CONSTRUCTION - PAYBACK 2021-2035																						
<b>BRIDGE PROJECTS</b>																						
<input checked="" type="checkbox"/>	SR 1212 (POND ROAD)	B-5347	REPLACE BRIDGE 000170 OVER PRONG OF ALAMANCE CREEK IN ALAMANCE.		1560	1560																
HF	ALAMANCE																					
UNDER CONSTRUCTION																						
<input checked="" type="checkbox"/>	SR 3058 (JUDGE ADAMS ROAD)	B-4960	REPLACE BRIDGE 400214 OVER LITTLE ALAMANCE CREEK.		3514	3514																
DIV	GUILFORD																					
UNDER CONSTRUCTION																						
<input checked="" type="checkbox"/>	SR 1928 (TROLLINGWOOD ROAD)	B-6052	REPLACE BRIDGE 000068 OVER NCRR / NORFOLK SOUTHERN RAILROAD IN HAW RIVER.		3000		NHPB						R	500								
							NHPB								C	2500						
DIV	ALAMANCE																					
<b>MITIGATION PROJECTS</b>																						
<input checked="" type="checkbox"/>	VARIOUS (ALAMANCE, CASWELL, GUILFORD, ORANGE, ROCKINGHAM)	EE-4907	ECOSYSTEM ENHANCEMENT PROGRAM FOR DIVISION 7 PROJECT MITIGATION.		18169	18169																
IN PROGRESS																						
<b>HIGHWAY SAFETY PROJECTS</b>																						
<input checked="" type="checkbox"/>	VARIOUS (ALAMANCE, CASWELL, GUILFORD, ORANGE, ROCKINGHAM)	HS-2007	SAFETY IMPROVEMENTS AT VARIOUS LOCATIONS IN DIVISION 7.																			
DIV																						
PROGRAMMED FOR PRELIMINARY ENGINEERING ONLY. INDIVIDUAL PROJECTS AND FUNDING TO BE REQUESTED IN THE FUTURE AS NEEDED.																						
<input checked="" type="checkbox"/>	VARIOUS (ALAMANCE, CASWELL, GUILFORD, ORANGE, ROCKINGHAM)	W-5707	SAFETY IMPROVEMENTS AT VARIOUS LOCATIONS IN DIVISION 7.		4757	4057	HSIP	R	30	DIV												
							HSIP	C	180	DIV												
							HSIP	R	30	RE												
							HSIP	C	180	RE												
							HSIP	R	40	SW												
							HSIP	C	240	SW												
							ALTERNATE CRITERIA	DIV	DIV													
							ALTERNATE CRITERIA	REG	REG													
							ALTERNATE CRITERIA	SW	SW													
IN PROGRESS																						

DIV - Division Category EX - Exempt Category  
 HF - State Dollars (Non STI) REG - Regional Category  
 SW - Statewide Category TRN - Transition Project

COST AND SCHEDULES ARE PRELIMINARY AND SUBJECT TO SIGNIFICANT CHANGE AS MORE INFORMATION BECOMES AVAILABLE



BURLINGTON-GRAHAM URBAN AREA METROPOLITAN PLANNING ORGANIZATION

TYPE OF WORK / ESTIMATED COST IN THOUSANDS / PROJECT BREAKS

COMMITTED / NON	ROUTE/CITY COUNTY	ID NUMBER	LOCATION / DESCRIPTION	LENGTH	TOTAL PROJ COST (THOU)	PRIOR YEARS COST (THOU)	FUNDS	FY 2020	FY 2021	FY 2022	STATE TRANSPORTATION IMPROVEMENT PROGRAM					DEVELOPMENTAL PROGRAM					UNFUNDED FUTURE YEARS																			
											FY 2023	FY 2024	FY 2025	FY 2026	FY 2027	FY 2028	FY 2029	FY 2030	FY 2031	FY 2032																				
<b>HIGHWAY SAFETY PROJECTS</b>																																								
<input checked="" type="checkbox"/>		VARIOUS	W-5207	DIVISION 7 RUMBLE STRIPS, GUARDRAIL, SAFETY AND LIGHTING IMPROVEMENTS AT SELECTED LOCATIONS.	5636	5636																																		
		ALAMANCE CASWELL GUILFORD ORANGE ROCKINGHAM																																						
<b>UNDER CONSTRUCTION</b>																																								
<input checked="" type="checkbox"/>		VARIOUS	W-5807	SAFETY IMPROVEMENTS AT VARIOUS LOCATIONS IN DIVISION 7.	506																																			
		ALAMANCE CASWELL GUILFORD ORANGE ROCKINGHAM					ALTERNATE CRITERIA	REG	A																															
							ALTERNATE CRITERIA	DIV	B																															
							SR 2526 (SUMMIT AVENUE) RAMP TERMINALS IN GREENSBORO. MODIFY CHANNELIZATION ISLAND AND INSTALL TRAFFIC SIGNAL, PEDESTRIAN HEADS, AND CROSSWALKS.																																	
							SR 1301 (ST. MARKS CHURCH ROAD) / JAVA LANE AND GLIDWELL DRIVE / TIKI LANE IN BURLINGTON. INSTALL PEDESTRIAN SIGNALS AND CURB RAMPS, AND REVISE PAVEMENT MARKINGS.																																	
<b>INDIVIDUAL PROJECTS AND FUNDING TO BE REQUESTED IN THE FUTURE AS NEEDED.</b>																																								
<b>CONGESTION MITIGATION PROJECTS</b>																																								
<input checked="" type="checkbox"/>		VARIOUS	C-5602	PROJECTS TO IMPROVE CONGESTION AND AIR QUALITY IN THE BURLINGTON-GRAHAM MPO.	57																																			
	EX	GUILFORD ORANGE																																						
							CMAQ	PE	5																															
							L	PE	1																															
							CMAQ	R	5																															
							L	R	1																															
							CMAQ	C	26																															
							L	C	7																															
							CMAQ	O	5																															
							L	O	1																															
							CMAQ	I	5																															
							L	I	1																															
<b>AVIATION PROJECTS</b>																																								
<input checked="" type="checkbox"/>		BURLINGTON-ALAMANCE REGIONAL AIRPORT (BUY)	AV-5737 A130048	OBTAIN NAVIGATION EASEMENTS AND CLEAR OBSTRUCTIONS IN THE RUNWAY 24 APPROACH.	1363	163	T																																	
	DIV	ALAMANCE																																						

DIV - Division Category EX - Exempt Category  
 HF - State Dollars (Non STI) REG - Regional Category  
 SW - Statewide Category TRN - Transition Project

COST AND SCHEDULES ARE PRELIMINARY AND SUBJECT TO SIGNIFICANT CHANGE AS MORE INFORMATION BECOMES AVAILABLE

BURLINGTON-GRAHAM URBAN AREA METROPOLITAN PLANNING ORGANIZATION

TYPE OF WORK / ESTIMATED COST IN THOUSANDS / PROJECT BREAKS

COMMITTED / NON	ROUTE/CITY COUNTY	ID NUMBER	LOCATION / DESCRIPTION	LENGTH	TOTAL PROJ COST (THOU)	PRIOR YEARS COST (THOU)	FUNDS	FY 2020	FY 2021	FY 2022	STATE TRANSPORTATION IMPROVEMENT PROGRAM					DEVELOPMENTAL PROGRAM					UNFUNDED FUTURE YEARS		
											FY 2023	FY 2024	FY 2025	FY 2026	FY 2027	FY 2028	FY 2029	FY 2030	FY 2031	FY 2032			
<b>BICYCLE AND PEDESTRIAN PROJECTS</b>																							
<input checked="" type="checkbox"/>	US 70 (NORTH CHURCH STREET)	EB-5879 B140730	SR 1716 (GRAHAM-HOPEDALE ROAD) TO SR 1719 (SELLARS MILL ROAD) IN BURLINGTON. CONSTRUCT SIDEWALK.	0.4	110	16	TA5200	R	22														
							L	R	6														
							TA5200	C	53														
							L	C	13														
DIV	ALAMANCE																						
IN PROGRESS																							
<input checked="" type="checkbox"/>	NC 49 / NC 54 (HARDEN STREET)	EB-5887 B140796	WEST PINE STREET TO NORTH MARSHALL STREET IN GRAHAM. CONSTRUCT SIDEWALK.	0.8	175	26	TA5200			R	35												
							L			R	9												
							TA5200					C	84										
							L					C	21										
DIV	ALAMANCE																						
IN PROGRESS																							
<input checked="" type="checkbox"/>	NC 87 (SOUTH MAIN STREET)	EB-5884 B140786	SR 2183 (IVEY ROAD) TO SR 2100 (EAST GILBREATH STREET) IN GRAHAM. CONSTRUCT SIDEWALK.	0.8	539	55	TA5200	R	184														
							L	R	46														
							TA5200			C	203												
							L			C	51												
DIV	ALAMANCE																						
<input checked="" type="checkbox"/>	LEE AVENUE	EB-5988 B171211	WEST LEBANON AVENUE TO SR 1454 (WEST HAGGARD AVENUE) IN ELON. CONSTRUCT SIDEWALK.	0.2	307		TA5200																
							L																
							TA5200																
							L																
							TA5200																
							L																
DIV	ALAMANCE																						
<input checked="" type="checkbox"/>	SR 1716 (GRAHAM-HOPEDALE ROAD)	EB-5882 B140726	SR 1720 (WEST HANOVER ROAD) TO NORTH MEBANE STREET IN BURLINGTON. CONSTRUCT SIDEWALK.	0.6	137		TA5200	R	14														
							L	R	4														
							TA5200			C	95												
							L			C	24												
DIV	ALAMANCE																						
<b>PUBLIC TRANSPORTATION PROJECTS</b>																							
<input checked="" type="checkbox"/>	ALAMANCE COUNTY TRANSPORTATION	TG-6811B	FUNDING FOR PREVENTIVE MAINTENANCE.		46		FED	CP	37														
							L	CP	9														
PT	ALAMANCE																						
<input checked="" type="checkbox"/>	ALAMANCE COUNTY TRANSPORTATION	TK-6103	ADMINISTRATION		4882	3458	5311	AD	89	AD	89	AD	89	AD	89								
							L	AD	53	AD	53	AD	53	AD	53								
							S	AD	214	AD	214	AD	214	AD	214								
PT	ALAMANCE																						
FUNDS AUTHORIZED IN PROGRESS																							
<input checked="" type="checkbox"/>	BURLINGTON	TA-6733	CAPITAL FOR FIXED ROUTE VEHICLE REPLACEMENT		1235		5307	CP	1029														
							L	CP	206														
PT	ALAMANCE																						
ADD PROJECT TA-6733 TO STIP FOR FFY2019. NEW PROJECT DEVELOPED FOR FEDERAL FUNDING AWARD. PROJECT ADDED AT REQUEST OF BGMPO.																							
<input checked="" type="checkbox"/>	BURLINGTON	TD-6322	CAPITAL FOR PEDESTRIAN IMPROVEMENTS FOR FIXED ROUTR SERVICES		60		5307	CP	50														
							L	CP	10														
	ALAMANCE																						
ADD PROJECT TD-6322 TO STIP FOR FFY2019. NEW PROJECT DEVELOPED FOR FEDERAL FUNDING AWARD. PROJECT ADDED AT REQUEST OF BGMPO.																							
<input checked="" type="checkbox"/>	BURLINGTON	TG-6812A	ADA SERVICES		211		5307	O	169														
							L	O	42														
PT	ALAMANCE																						
ADD PROJECT TG-6812A TO STIP FOR FFY2019. NEW PROJECT DEVELOPED FOR FEDERAL FUNDING AWARD. PROJECT ADDED AT REQUEST OF BGMPO.																							

DIV - Division Category EX - Exempt Category  
 HF - State Dollars (Non STI) REG - Regional Category  
 SW - Statewide Category TRN - Transition Project

COST AND SCHEDULES ARE PRELIMINARY AND SUBJECT TO SIGNIFICANT CHANGE AS MORE INFORMATION BECOMES AVAILABLE

BURLINGTON-GRAHAM URBAN AREA METROPOLITAN PLANNING ORGANIZATION

TYPE OF WORK / ESTIMATED COST IN THOUSANDS / PROJECT BREAKS

COMMITTED / NON	ROUTE/CITY COUNTY	ID NUMBER	LOCATION / DESCRIPTION	LENGTH	TOTAL PROJ COST (THOU)	PRIOR YEARS COST (THOU)	FUNDS	FY 2020	FY 2021	FY 2022	STATE TRANSPORTATION IMPROVEMENT PROGRAM					DEVELOPMENTAL PROGRAM					UNFUNDED					
											FY 2023	FY 2024	FY 2025	FY 2026	FY 2027	FY 2028	FY 2029	FY 2030	FY 2031	FY 2032	FUTURE YEARS					
<b>PUBLIC TRANSPORTATION PROJECTS</b>																										
<input checked="" type="checkbox"/>	BURLINGTON	TO-6170	OPERATING ASSISTANCE TO MAINTAIN CURRENT LEVEL OF SERVICE IN ADDITION TO SERVICE EXPANSION FOR WEEKEND SERVICE.		3394		5307	O	1697																	
	PT ALAMANCE						L	O	1697																	
ADD PROJECT TO-6170 TO STIP FOR FFY2019. NEW PROJECT DEVELOPED FOR FEDERAL FUNDING AWARD. PROJECT ADDED AT REQUEST OF BGMPO.																										
<input checked="" type="checkbox"/>	BURLINGTON	TP-5162	PLANNING FOR PLANNING FACILITY FEASIBILITY STUDY		95		5307	PL	76																	
	PT ALAMANCE						L	PL	19																	
ADD PROJECT TP-5162 TO STIP FOR FFY2019. NEW PROJECT DEVELOPED FOR FEDERAL FUNDING AWARD. PROJECT ADDED AT REQUEST OF BGMPO.																										
<input checked="" type="checkbox"/>	BURLINGTON	TP-5161	PLANNING FOR PLANNING FOR FIXED ROUTE SERVICE EXPANSION		5		5307	PL	4																	
	PT ALAMANCE						L	PL	1																	
ADD PROJECT TP-5161 TO STIP FOR FFY2019. NEW PROJECT DEVELOPED FOR FEDERAL FUNDING AWARD. PROJECT ADDED AT REQUEST OF BGMPO.																										
<input checked="" type="checkbox"/>	BURLINGTON - GRAHAM	TO-5220	5307 OPERATING FUNDS NC-2019-060-01-P10		282		5307	O	141	O	141															
	PT ORANGE																									
MODIFYING THE FEDERAL FUNDS RECEIVED FROM FTA ADMINISTERED BY PTD BASED ON SFY 2020 GRANTS																										
<input checked="" type="checkbox"/>	BURLINGTON/GIBSON ILLE	TO-6151	OPERATING FIXED ROUTE SYSTEM		4032	2016	5307	O	504	O	504															
	PT GUILFORD						L	O	504	O	504															
<input checked="" type="checkbox"/>	PIEDMONT AUTHORIT FOR REGIONAL TRANS.	TO-5136	OPERATING ASSISTANCE		11817	8549	SMAP	O	817	O	817	O	817													
	PT ALAMANCE GUILFORD													O	817											
FUNDS AUTHORIZED IN PROGRESS																										
<input checked="" type="checkbox"/>	PIEDMONT AUTHORIT FOR REGIONAL TRANS.	TO-5134	OPERATING		5800	2800	5307	O	250	O	250	O	250													
	PT ALAMANCE						L	O	250	O	250	O	250	O	250	O	250	O	250							
FUNDS AUTHORIZED IN PROGRESS																										
<input checked="" type="checkbox"/>	PIEDMONT AUTHORIT FOR REGIONAL TRANS.	TG-6137B	ROUTINE CAPITAL, PASSENGER AMENITIES, PARTS, EQUIPMENT, PREVENTIVE MAINTENANCE, AND CAPITAL COST OF CONTRACTING.		1000	250	5307	CP	100	CP	100	CP	100													
	PT ALAMANCE						L	CP	25	CP	25	CP	25	CP	100	CP	25	CP	25							
<input checked="" type="checkbox"/>	STATEWIDE	TG-6187	URBANIZED FORMULA PROGRAM FUNDS MANAGED BY NCDOT FOR ORANGE, ALAMANCE, DAVIDSON, GUILFORD, CABARRUS, IREDELL, HOKE, CUMBERLAND, HARNETT, UNION, MECKLENBURG TRANSPORTATION SYSTEMS - CAPITAL PROGRAM		3751	1313	5307	CP	600	CP	650	CP	700													
	PT ALAMANCE CABARRUS CUMBERLAND DAVIDSON GUILFORD HARNETT HOKE IREDELL MECKLENBURG ORANGE UNION						L	CP	150	CP	163	CP	175													

DIV - Division Category EX - Exempt Category  
 HF - State Dollars (Non STI) REG - Regional Category  
 SW - Statewide Category TRN - Transition Project

**BURLINGTON-GRAHAM URBAN AREA METROPOLITAN PLANNING ORGANIZATION**

TYPE OF WORK / ESTIMATED COST IN THOUSANDS / PROJECT BREAKS

COMMITTED / NON	ROUTE/CITY COUNTY	ID NUMBER	LOCATION / DESCRIPTION	LENGTH	TOTAL PROJ COST (THOU)	PRIOR YEARS COST (THOU)	STATE TRANSPORTATION IMPROVEMENT PROGRAM										DEVELOPMENTAL PROGRAM					UNFUNDED										
							FUNDS	FY 2020	FY 2021	FY 2022	FY 2023	FY 2024	FY 2025	FY 2026	FY 2027	FY 2028	FY 2029	FY 2030	FY 2031	FY 2032	FUTURE YEARS											
<b>PUBLIC TRANSPORTATION PROJECTS</b>																																
<input checked="" type="checkbox"/>	STATEWIDE	TO-6142	URBANIZED FORMULA PROGRAM FUNDS MANAGED BY NCDOT FOR ORANGE, ALAMANCE, DAVIDSON, GUILFORD, CABARRUS, IREDELL, HOKE, CUMBERLAND, HARNETT, UNION, MECKLENBURG TRANSPORTATION SYSTEMS - OPERATING		18778	7548	5307	CP	1835	CP	1871	CP	1909																			
PT	STATEWIDE						L	CP	1835	CP	1871	CP	1909																			
<input checked="" type="checkbox"/>	ALAMANACE COUNTY	TO-5214	OPERATING FOR ALAMANACE COUNTY TRANSPORTATION IN THE BURLINGTON URBAN AREA - THROUGH NCDOT		10060	2247	5307	O	284	O	660	O	670	O	680	O	690	O	700	O	710	O	720									
PT	ALAMANCE						L	O	284	O	330	O	335	O	340	O	345	O	350	O	355	O	360									
FUNDS AUTHORIZED IN PROGRESS																																
<b>PASSENGER RAIL PROJECTS</b>																																
<input checked="" type="checkbox"/>	VARIOUS	P-4405	PRIVATE CROSSING SAFETY INITIATIVE TO CLOSE OR ENHANCE PROTECTION AT RAILROAD CROSSINGS BETWEEN RALEIGH AND CHARLOTTE.		10291	10291																										
TRN	ALAMANCE CABARRUS DAVIDSON DURHAM GUILFORD MECKLENBURG ORANGE ROWAN WAKE																															
IN PROGRESS																																
<input checked="" type="checkbox"/>	VARIOUS	RC-2007	TRAFFIC SEPARATION STUDY IMPLEMENTATION AND CLOSURES IN DIVISION 7.																													
DIV	ALAMANCE CASWELL GUILFORD ORANGE ROCKINGHAM																															
PROGRAMMED FOR PRELIMINARY ENGINEERING ONLY. INDIVIDUAL PROJECTS AND FUNDING TO BE REQUESTED IN THE FUTURE AS NEEDED.																																
<input checked="" type="checkbox"/>	VARIOUS	RX-2007	HIGHWAY-RAIL GRADE CROSSING SAFETY IMPROVEMENTS IN DIVISION 7.																													
DIV	ALAMANCE CASWELL GUILFORD ORANGE ROCKINGHAM																															
PROGRAMMED FOR PRELIMINARY ENGINEERING ONLY. INDIVIDUAL PROJECTS AND FUNDING TO BE REQUESTED IN THE FUTURE AS NEEDED.																																
<input checked="" type="checkbox"/>	VARIOUS	Y-5807	TRAFFIC SEPARATION STUDY IMPLEMENTATION AND CLOSURES IN DIVISION 7.																													
DIV	ALAMANCE CASWELL GUILFORD ORANGE ROCKINGHAM																															
INDIVIDUAL PROJECTS AND FUNDING TO BE REQUESTED IN THE FUTURE AS NEEDED.																																
<input checked="" type="checkbox"/>	VARIOUS	Z-5807	HIGHWAY-RAIL GRADE CROSSING SAFETY IMPROVEMENTS IN DIVISION 7.																													
DIV	ALAMANCE CASWELL GUILFORD ORANGE ROCKINGHAM																															
INDIVIDUAL PROJECTS AND FUNDING TO BE REQUESTED IN THE FUTURE AS NEEDED.																																

DIV - Division Category	EX - Exempt Category
HF - State Dollars (Non STI)	REG - Regional Category
SW - Statewide Category	TRN - Transition Project

COST AND SCHEDULES ARE PRELIMINARY AND SUBJECT TO SIGNIFICANT CHANGE AS MORE INFORMATION BECOMES AVAILABLE

BURLINGTON-GRAHAM URBAN AREA METROPOLITAN PLANNING ORGANIZATION

TYPE OF WORK / ESTIMATED COST IN THOUSANDS / PROJECT BREAKS

COMMITTED / NON	ROUTE/CITY COUNTY	ID NUMBER	LOCATION / DESCRIPTION	LENGTH	TOTAL PROJ COST (THOU)	PRIOR YEARS COST (THOU)	FUNDS	FY 2020	FY 2021	FY 2022	STATE TRANSPORTATION IMPROVEMENT PROGRAM					DEVELOPMENTAL PROGRAM					UNFUNDED	
											FY 2023	FY 2024	FY 2025	FY 2026	FY 2027	FY 2028	FY 2029	FY 2030	FY 2031	FY 2032	FUTURE YEARS	
<b>PASSENGER RAIL PROJECTS</b>																						
<input checked="" type="checkbox"/>	TRN	ALAMANCE	P-5205	GRAHAM TO HAW RIVER. SIDING AND CURVE REALIGNMENT.		11605	11605															
													UNDER CONSTRUCTION									
<input checked="" type="checkbox"/>	EX	ALAMANCE CABARRUS DAVIDSON DURHAM GUILFORD MECKLENBURG ORANGE RANDOLPH ROWAN WAKE	P-2918	TRAIN 74 / 75 OPERATIONS BETWEEN CHARLOTTE AND RALEIGH, EQUIPMENT AND CAPITAL YARD MAINTENANCE FACILITY.		174422	174422															
													UNDER CONSTRUCTION									
									A													
									B													
									C													
									D													
									E													
									F													
									G													
									H													
									I													
<input checked="" type="checkbox"/>		ALAMANCE CABARRUS DAVIDSON DURHAM GUILFORD MECKLENBURG ORANGE RANDOLPH ROWAN WAKE	P-5719 R150274	PURCHASE AND REFURBISH RAIL CARS FOR PIEDMONT SERVICE EXPANSION.		45277	45277															
									EX	A												
									EX	B												
									REG	C												

DIV - Division Category  
 HF - State Dollars (Non STI)  
 SW - Statewide Category  
 EX - Exempt Category  
 REG - Regional Category  
 TRN - Transition Project

COST AND SCHEDULES ARE PRELIMINARY AND SUBJECT TO  
 SIGNIFICANT CHANGE AS MORE INFORMATION BECOMES AVAILABLE

Division 7 and 9 MPO and RPO P6.0 Alternative Weights Options for Division Needs  
October 2020

Criteria	(Current)	Option 1 (Proposed)
Congestion	15%	15%
Benefit/Cost	15%	15%
Safety	10%	15
Freight	5%	0
Accessibility/Connectivity	5%	5%
Total	50%	50%

**BURLINGTON - GRAHAM METROPOLITAN PLANNING ORGANIZATION**  
**RESOLUTION ADOPTING ALTERNATIVE CRITERIA WEIGHTS FOR THE**  
**QUANTITATIVE EVALUATION OF DIVISION NEED PROJECTS TO ADDRESS THE**  
**STRATEGIC PRIORITIZATION FUNDING PLAN FOR TRANSPORTATION**  
**INVESTMENTS FOR DIVISION 7**

**WHEREAS**, the Burlington - Graham Planning Organization provides transportation planning services for Alamance County and portions of Guilford and Orange Counties; and

**WHEREAS**, House Bill 817 outlines the Strategic Prioritization Funding Plan for Transportation Investments; and

**WHEREAS**, based on this legislation quantitative, qualitative and local input criteria shall be used to rank Division Need Projects; and

**WHEREAS**, Metropolitan Planning Organizations (MPOs), Rural Transportation Planning Organizations (RPOs) and the North Carolina Department of Transportation Division Engineers have been given an opportunity to define their own quantitative criteria and weights for the quantitative evaluation of Division Needs Projects using the criteria outlined by the Strategic Planning Office of Transportation Workgroup; and

**WHEREAS**, the Burlington – Graham MPO is located in Division 7 as defined by the legislation and the North Carolina Department of Transportation; and

**WHEREAS**, a set of criteria, referred to as Option 1, has been proposed to evaluate Division Needs Projects for Division(s) 7 jurisdiction based on the following quantitative criteria: 15% Congestion, 15% Benefit/Cost, 15% Safety; and 5% Accessibility/Connectivity; and

**NOW THEREFORE**, be it resolved by the Burlington – Graham Metropolitan Planning Organization's Transportation Advisory Committee hereby supports the criteria for the quantitative evaluation of Division Need Projects to address the Strategic Transportation Investment for Division 7.

ADOPTED at the regular meeting of the Burlington - Graham Metropolitan Planning Organization Transportation Advisory Committee on \_\_\_\_\_, \_\_\_\_\_, 2020

---

I, Leonard Williams, Transportation Advisory Committee Chair, do hereby certify that the above is a true and correct copy of the excerpt from the minutes of a meeting of the Burlington - Graham MPO Transportation Advisory Committee, duly held on the \_\_\_\_\_ day of \_\_\_\_\_, 2020.

\_\_\_\_\_  
Leonard Williams, Chair  
Transportation Advisory Committee

STATE of: North Carolina  
COUNTY of Alamance

I, \_\_\_\_\_, Notary Public of \_\_\_\_\_ County, North Carolina do hereby certify that Leonard Williams personally appeared before me on the \_\_\_\_\_ day of \_\_\_\_\_ 2020 to affix his signature to the foregoing document.

\_\_\_\_\_  
Notary Public  
My Commission expires: \_\_\_\_\_

## NCDOT PROJECTS LOCATED IN BGUMPO - UNDER DEVELOPMENT

TIP/WBS #	Description	Let/Start Date	Completion Date	Cost	Status	Project Lead
SS-4907BQ 44757.1.1 44757.2.1 44757.3.1	Intersection improvements (All Way Stop) at SR 1005 (Greensboro-Chapel Hill Road) at SR 2369 (Sylvan School Road) and SR 2371 (Pleasant Hill Road) in <b>Snow Camp</b> .	8/15/17	Dec. 2020	\$22,500 R/W \$153,000 CON	4-way stop installation and flasher completed 4/17/18, utility relocations complete, widening delayed to Fall 2020	Derek Dixon
48172	Planning and design of SR 1446 (Rockwood Ave.) from existing end of maintenance to NC87 in <b>Glen Raven</b> . Develop roadway, hydraulic and ROW plans	9/6/18	TBD	\$500,000	Planning activities underway, Express design has been requested (Feasibility Unit), Project submittal for P6.0	Tamara Njegovan Stephen Robinson
SS-4907CK 48306.1.1 48306.3.1	Install all-way (4-way) stop at intersection of NC 62 at SR 2029/SR 2030 (Old NC 49). Upgrade existing overhead flasher to flash all-red on all intersection approaches.	7/11/19	Dec. 2020	\$110,000	No re-alignment, signs and flashers only, construction schedule pending, materials purchase pending	Dawn McPherson
48798	Installation of crosswalks and pedestrian signals and update curb ramps at the intersection of US 70 (South Church Street) and Edgewood Avenue (non-system) in <b>Burlington</b> .	Dec. 2020	Mar. 2021	\$150,394	Planning and design activities underway	Dawn McPherson Derek Dixon
I-5711 50401.2.1 50401.3.1	Interchange improvements at I-40/I-85 and SR 1007 (Mebane Oaks Rd) in <b>Mebane</b> .	3/16/21	FY2023	\$13,100,000	ROW acquisition underway - 50% complete, ROW Certified w/delays	Laura Sutton
47786 SM-5707B 47903.2.1	Intersection improvements on SR 1007 (Mebane Oaks Rd) at SR 2126/2128 (Old Hillsborough Rd) south of <b>Mebane</b> . Improvements include addition of left and right turn lanes, radii widening, signal installation, resurfacing, and pavement markings.	Apr. 2021	Jun. 2021	\$898,500	Design complete, ROW acquisition underway - 90% complete with right of entry, Utility relocations pending	Chad Reimakoski Derek Dixon
SS-6007B 48887.1.1 48887.3.1	All-Way Stop installation at SR 1529 (Durham Street) and SR 1530 (Elmira Street)	Apr. 2021	Jun. 2021	\$32,400	Funds approved and released 9/11/19	Dawn Mcpherson
B-5728 45684.1.1 45684.2.1 45684.3.1	Replace Bridge #112 over Reedy Fork Creek on NC87 in <b>Ossipee</b>	4/20/21	FY2023	\$6,000,000	Planning and design activities underway	Kevin Fischer



## NCDOT PROJECTS LOCATED IN BGUMPO - UNDER DEVELOPMENT

TIP/WBS #	Description	Let/Start Date	Completion Date	Cost	Status	Project Lead
U-6010 47145.1.1 47145.2.1 47145.3.1	Intersection improvements at US 70 (South Church Street) and SR 1226/SR 1311 (University Drive) in <b>Burlington</b>	4/20/21	FY2023	\$8,400,000	Planning and design activities underway, ROW acquisition underway	Brian Ketner
SS-6007A 48886.1.1 48886.3.1	All-Way Stop installation with overhead flashers, and rumble strips installation at NC 49 and SR 1005 (West Greensboro Chapel Hill Road).	Jun. 2021	Oct. 2021	\$61,200	Funds approved and released 9/11/19	Dawn Mcpherson
U-6017 47162.1.1 47162.2.1 47162.3.1	Intersection improvements at NC 54 (East Harden St.) and NC 49 (East Elm St.) in <b>Graham</b>	4/21/22	FY2024	\$1,216,000	Planning and design activities underway	Chad Reimakoski
SS-6007G 49117.1.1 49117.3.1	Installation of overhead flasher on NC 49 at SR 1130 (Friendship Patterson Mill Road) south of <b>Burlington</b> .	Jun. 2022	Nov. 2022	\$9,900	Funds approved 3/5/20 but not released	Dawn McPherson
SS-6007H 49118.1.1 49118.3.1	Installation of pedestrian countdown heads at two existing crosswalks at the intersection of NC 62 (Rauhut Street) and SR 1537 (Sharpe Road) north of <b>Burlington</b> .	Jun. 2022	Nov. 2022	\$20,800	Funds approved 3/5/20 but not released	Dawn McPherson
U-6013 47158.1.4 47158.2.4 47158.3.4	Widen NC 119 to multi-lanes from SR 1981 (Trollingwood-Hawfields Rd)/ SR 2126 (Old Hillsborough Rd) to Lowes Blvd (non-system) in <b>Mebane</b> .	7/19/22	FY 2024	\$5,200,000	Planning and design activities underway	Brian Ketner
W-5807B 48952.1.3 48952.2.3 48952.3.3	Installation of ADA curb ramps and pedestrian accessible signals on SR 1301 (Boone Station Drive) at SR 1301 (St. Marks Church Road) and Boone Station Drive (non-system) at Glidewell Road/Tiki Lane (non-system) in <b>Burlington</b>	10/20/22	FY2024	\$75,000	PE funds scheduled to be released 2/2/21	Dawn McPherson Chad Reimakoski
U-6014 47159.1.1 47159.2.1 47159.3.1	Widen SR 1716 (Graham-Hopedale Rd) to multi-lanes with Bicycle/Pedestrian accommodations from SR 1720 (West Hanover Rd) to Morningside Drive in <b>Burlington</b>	5/16/23	FY 2025	\$11,300,000	Planning and design activities underway	Chad Reimakoski

**NCDOT PROJECTS LOCATED IN BGUMPO - UNDER DEVELOPMENT**

TIP/WBS #	Description	Let/Start Date	Completion Date	Cost	Status	Project Lead
U-6011 47146.1.1 47146.2.1 47146.3.1	Intersection improvements at US 70 (South Church Street) and SR 1158 (Huffman Mill Rd) in <b>Burlington</b>	8/15/23	FY2026	\$2,400,000	Planning and design activities underway	Brian Ketner
U-5844 50234.1.1 50234.2.1 50234.3.1	Construct multi-lanes on NC62 from SR 1430 (Ramada Road) to US 70 (South Church Street) in <b>Burlington</b>	11/21/23	FY2026	\$9,000,000	Planning and design activities underway	Chad Reimakoski
U-6009 47144.1.1 47144.2.1 47144.3.1	Widen and construct center turn lane on US70 (West Church St) from Tarleton Ave. to Fifth Street in <b>Burlington</b>	6/18/24	FY2026	\$6,337,000	Planning and design activities underway	Chad Reimakoski
B-6052 48709.1.1 48709.2.1 48709.3.1	Replace bridge 68 over NCRR / Norfolk Southern Railroad on SR 1928 (Trollingwood Road) in <b>Haw River</b>	1/20/26	FY2027	\$2,500,000	PE funding approved 5/6/19	Kevin Fischer
I-6009 47962.1.1 47962.2.1 47962.3.1	Interchange improvements at I-40/I-85 and SR 1158 (Huffman Mill Road). Construct additional right turn lane on I-40 WB Ramp and improve operations at SR 1308 (Garden Road) intersection in <b>Burlington</b>	6/18/26	FY2027	\$936,000	PE funding approved 6/5/18	Brian Ketner
I-6059 48689.1.1 48689.2.1 48689.3.1	Interchange improvements at I-40/I-85 and SR 1981 (Trollingwood-Hawfields Road) in <b>Mebane</b>	3/21/28	FY2030	\$12,400,000	PE funding scheduled for 12/16/23	Laura Sutton

## North Carolina Department of Transportation

## Active Projects Under Construction - Alamance Co.

Contract Number	TIP Number	Location Description	Contractor Name	Resident Engineer	Contract Bid Amount	Availability Date	Completion Date	Work Start Date	Estimated Completion Date	Progress Schedule Percent	Completion Percent
C203676	B-5239	REPLACE BRIDGE #126 OVER MILL RACE AND BRIDGE #119 OVER HAW RIVER ON NC-87.	DANE CONSTRUCTION INC	Howell, Bobby J	\$4,786,122.27	3/15/2018	3/29/2020	3/15/2018	11/1/2020	100.00	99.95
C203844	U-3109A	NC-119 RELOCATION FROM I-40/85 TO SR-1921 (MEBANE ROGERS RD/ STAGE COACH RD).	THALLE CONSTRUCTION CO., INC.	Howell, Bobby J	\$45,389,069.36	6/26/2017	1/28/2021	8/3/2017	7/23/2021	98.00	71.46
C204106	U-3109B	NC-119 RELOCATION NORTH OF SR-1921 (MEBANE ROGERS RD) TO SOUTH OF SR-1918 (MRS WHITE RD).	THALLE CONSTRUCTION CO., INC.	Howell, Bobby J	\$8,151,660.80	8/27/2018	11/28/2020	10/4/2018	5/28/2021	100.00	52.78
C204111	U-6015	BURLINGTON - GRAHAM SIGNAL SYSTEM.	ALS OF NORTH CAROLINA LLC	Howell, Bobby J	\$7,938,392.20	10/29/2018	8/15/2021	2/11/2019	10/27/2021	68.00	31.99
DG00392		RESURFACE 26 SECONDARY ROADS IN ALAMANCE AND 1 SECONDARY ROAD IN GUILFORD COUNTY SR 3349	RILEY PAVING INC	Howell, Bobby J	\$1,059,904.41	4/2/2018	10/12/2018	8/2/2018	1/8/2019	100.00	99.76
DG00426		RESURFACE A PORTION OF NC 87 AND PORTIONS OF 3 SECONDARY ROADS	RILEY PAVING INC	Lorenz, PE, Kris	\$3,463,032.95	7/9/2018	11/1/2019	2/25/2020	11/1/2020	61.50	51.84
DG00432		RESURFACE A PORTION OF US 70 AND 6 SECONDARY ROADS IN ALAMANCE COUNTY AND A PORTION OF 1 SR IN GUILFORD CO.	RILEY PAVING INC	Howell, Bobby J	\$1,878,598.12	7/9/2018	11/1/2019	3/29/2019	1/10/2020	100.00	97.02
DG00441		DECK OVERLAYS W/LATEX MODIFIED CONCRETE - VERY EARLY STR BRDG JNT REPL ON BRIDGE #71-ALAMANCE AND # 90,#195,#261 - GUILFORD	EXTREME CONCRETE CUTTING OF GAFFNEY LLC	Howell, Bobby J	\$1,248,556.25	6/4/2018	9/24/2018	8/8/2018	12/22/2018	100.00	94.13
DG00445	R-5787BB W-5707A	INSTALLATION OF ADA COMPLIANT CURB RAMPS AT VARIOUS INTERSECTIONS	LITTLE MOUNTAIN BUILDERS OF CATAWBA COUNTY INC	Howell, Bobby J	\$319,319.80	6/25/2018	2/15/2020	8/6/2018	2/15/2020	100.00	92.94
DG00457	U-5752	INTERSECTION IMPROVEMENTS AT US 70 (CHURCH STREET) AND SR 1301 (ST. MARKS CHURCH ROAD)	SHARPE BROTHERS A DIVISION OF VECELLIO & GROGAN INC	Howell, Bobby J	\$1,790,372.74	9/4/2018	3/31/2020	10/23/2018	5/30/2020	100.00	99.90
DG00473	U-5843	INTERSECTION IMPROVEMENTS AT US 70 (CHURCH ST.) AND SR 1716 (GRAHAM-HOPEDALE RD)	P & S GRADING LLC	Howell, Bobby J	\$2,495,284.62	4/1/2019	4/1/2020	3/19/2019	3/21/2021	98.00	71.23
DG00477		RESURFACE US 70 (CHURCH ST.) FROM 5TH ST TO 380' W OF SR 1928 (JIMMY KERR RD.), US 70WB (FISHER ST.)FROM BEG OF SPLIT TO END OF SPLIT	RILEY PAVING INC	Howell, Bobby J	\$3,614,442.95	7/8/2019	10/30/2020	7/29/2019	10/30/2020	82.00	99.94
DG00479		MILL AND RESURFACE A PORTION OF NC 54 AND PORTIONS OF 9 SECONDARY ROADS	APAC - ATLANTIC INC THOMPSON ARTHUR DIVISION	Howell, Bobby J	\$2,142,415.27	6/17/2019	10/30/2020	6/26/2019	10/30/2020	90.00	99.84



Piedmont Authority  
for Regional Transportation

# What's Happening at PART

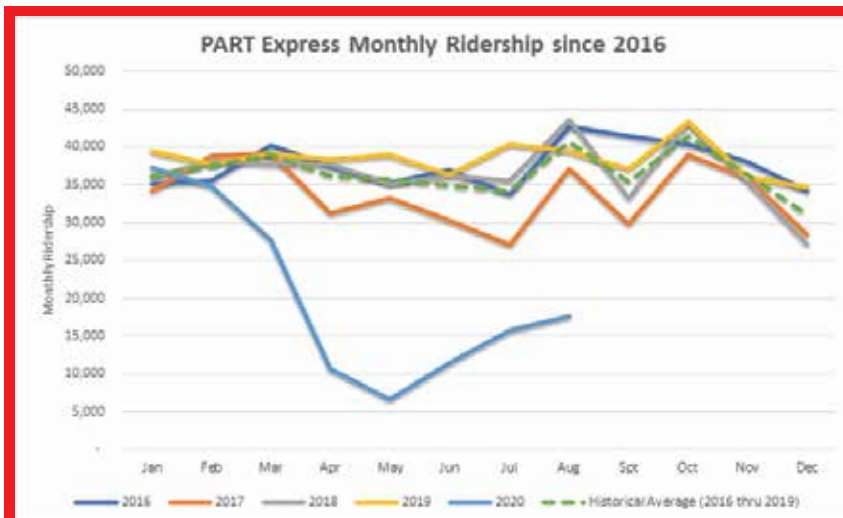
## October 2020

### Time Fly's When You Are Having Fun

Amidst all the challenges society has faced over the last several months, PART continues to meet our mission of enhancing all forms of transportation by Connecting Communities. On September 30th, we recognized our 18-year anniversary of PART Express. Since then we have seen a lot of changes including modifications in service, the development of a Regional Call Center, new Intermodal Transportation Center, vast technological enhancements, and expansion of our fleet. Through our 18 years of providing PART Express we have had hard working and dedicated staff, driver's, dispatchers, and maintenance personnel making it all happen. We also recognize we could not have done any of this without the support of our member agencies, PART Board of Trustees, and most importantly our customers. A special thank you to everyone who has worked with us over the last 18 years to make PART Express the success it is today.



### PART Express Ridership Update



PART Express continues to see gradual increases in ridership. This is likely due to a variety of factors. With the exception of Route 5 – Amtrak Connector, PART has returned all routes to regular service. In addition, changes in the phased reopening of various work sites have increased commuter travel throughout the Triad. We are pleased to report that the agency saw a 12.4% increase. This is especially positive as some reports indicate that 52% of consumers are wary of increases in ridership through October. However, the holiday season (Nov-Jan) has always seen significant decreases in ridership. One additional positive is that

more and more evidence is acknowledging that public transit is not a “super-spreader” of the COVID-19 virus as initially believed. Protective measures on PART Express will stay in place to help combat the spread.

continued on Page 2

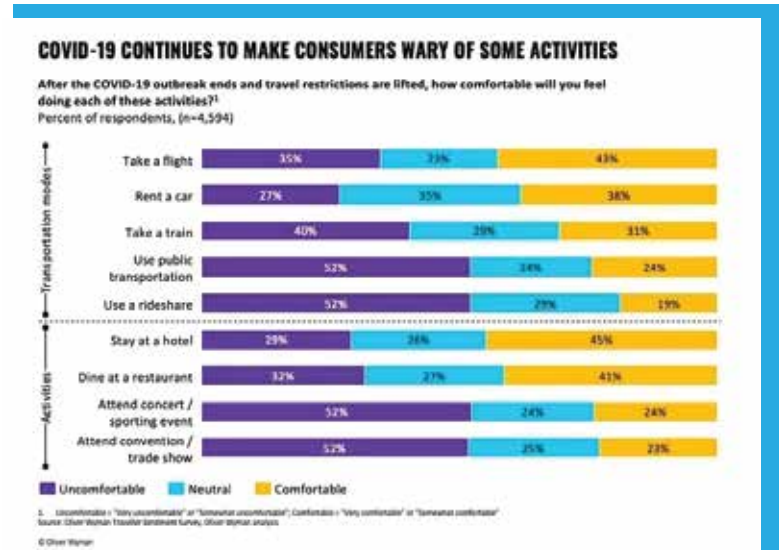
# October 2020

## Where Do WE Go From Here

Every transit agency around the globe is asking themselves the same question. Where do we go from here? How do we adjust to the new normal? What is the new normal? What does ridership look like moving forward? Will things ever be like they were before?

As we attempt to answer these questions there is some consensus in the transit community:

- After September 11th, it took 18 months before the airline industry rebounded. Surveys indicate people are more comfortable flying than using public transportation. Recovery is likely a marathon not a sprint.
- Contactless payment technology is a must for transit. Many agencies are even evaluating the elimination of cash payments on transit vehicles all together. PART was well positioned because of the implementation of our TouchPass system in 2018.



- Cleaning protocols are key! Passengers must feel public transit is safe. Reducing their anxieties about the spread of COVID is one of the most important things to encourage ridership. This ranges from disinfecting high touch areas to fumigation and improving ventilation.
- Think outside of the box. Agencies have traditionally been cautious about making sweeping changes to service. With the reductions in ridership, funding challenges, and changes in demand; experts are encouraging agencies

## Continued Response to COVID-19

PART continues to operate under the special rules and regulations established in May 2020. These guidelines were created in response to guidance and recommendations provided by the Center for Disease Control, local health departments, our partnering agencies, and the American Public Transportation Association. Our goal is to minimize the spread of COVID-19 and associated risks to our drivers, passengers, and community. In addition to our normal cleaning procedures, we utilize a commercial disinfectant on all vehicles in combination with a disinfecting fogger. Hard surfaces in our passenger facilities are also repeatedly cleaned.



## October 2020

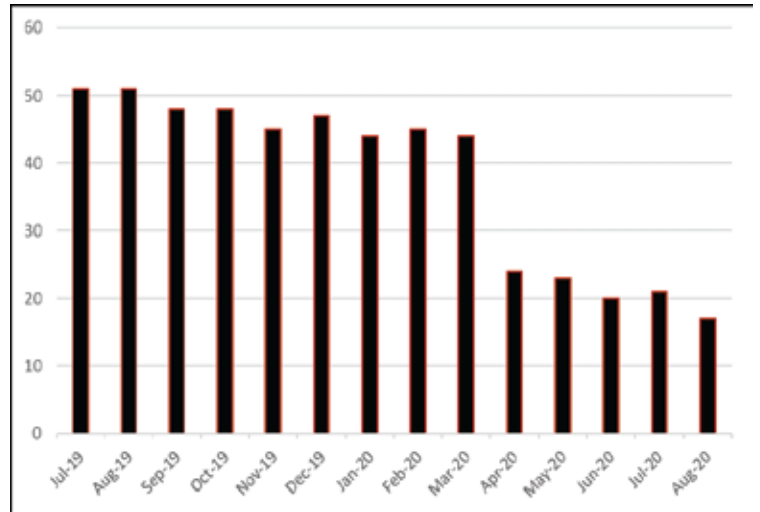
### PART's continued response and policies include:

- Passengers MUST wear dedicated facial coverings (masks, bandanas, etc.) when riding PART Express.
- Passengers should adhere to social distancing when boarding and riding PART Express
- Passengers can pay fares using TouchPass Smartcard/Mobile App or Cash.
- Passengers using cash should use exact fare and will pay for each trip.
- NO Change Cards and NO transfers will be provided.
- Only one passenger is allowed on the bus at a time during boarding.
- NO personal grooming activities allowed while riding the bus or in PART facilities.
- Passengers must have proper hygiene to board the bus.
- Passengers must wear clothing covering their upper and lower torso and shoes.
- NO eating or drinking while riding the bus.
- Passengers must disembark the bus at the end of the line.
- Passengers cannot exhibit any visible signs or symptoms of the Coronavirus in order to ride the bus. Passengers exhibiting symptoms will be asked to disembark.



## Impacts to Regional Vanpool Program

PART's Regional Vanpool Program provides groups of commuters with 7 and 15 passenger vans to use for their daily commute to and from work. The program has served the Triad for over 20 years. It has historically been one of the highest performing vanpool programs in North Carolina. Unfortunately, due to the COVID-19 pandemic, the program has suffered. Prior to April 2020, the program averaged 47 vans in operation; we are currently operating 17. The reasons for the reductions in participation has ranged from commuters working from home to employers concerns about supporting the program. The publics concerns about ridesharing is still very prevalent in many communities and it is unknown how long they will last. Staff is working with organizations such as the Association for Commuter Transportation and Center for Urban Transportation Research to understand how vanpooling programs across the country are rebuilding in a post-COVID environment. Not knowing the long term impact, PART is addressing the excess fleet by reaching out to other state agencies regarding opportunities to transfer vehicles.



### STAY CONNECTED

www.PARTNC.org  
336.883.7278  
contactus@partnc.org



TransLoc Bus Tracking App